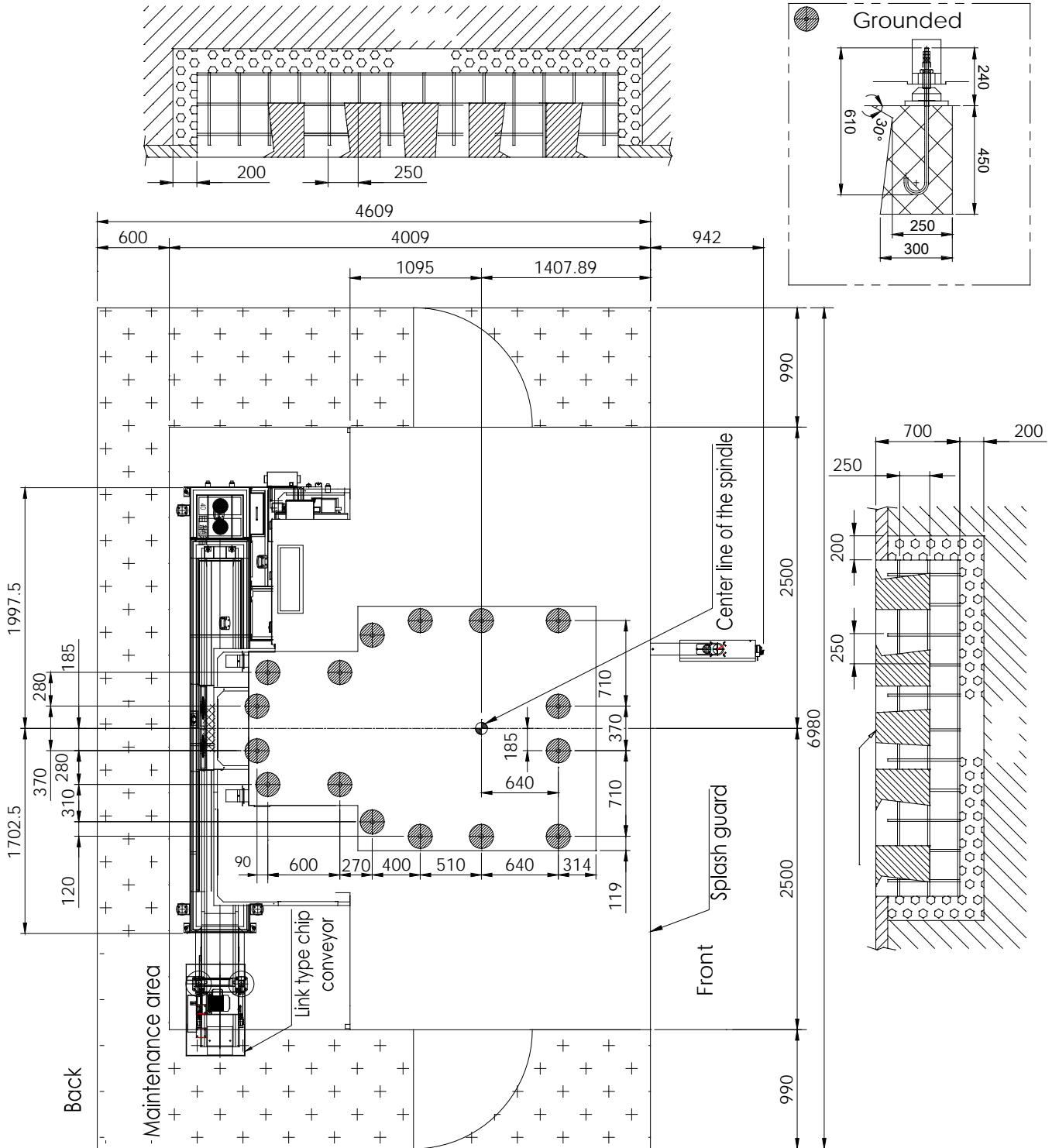




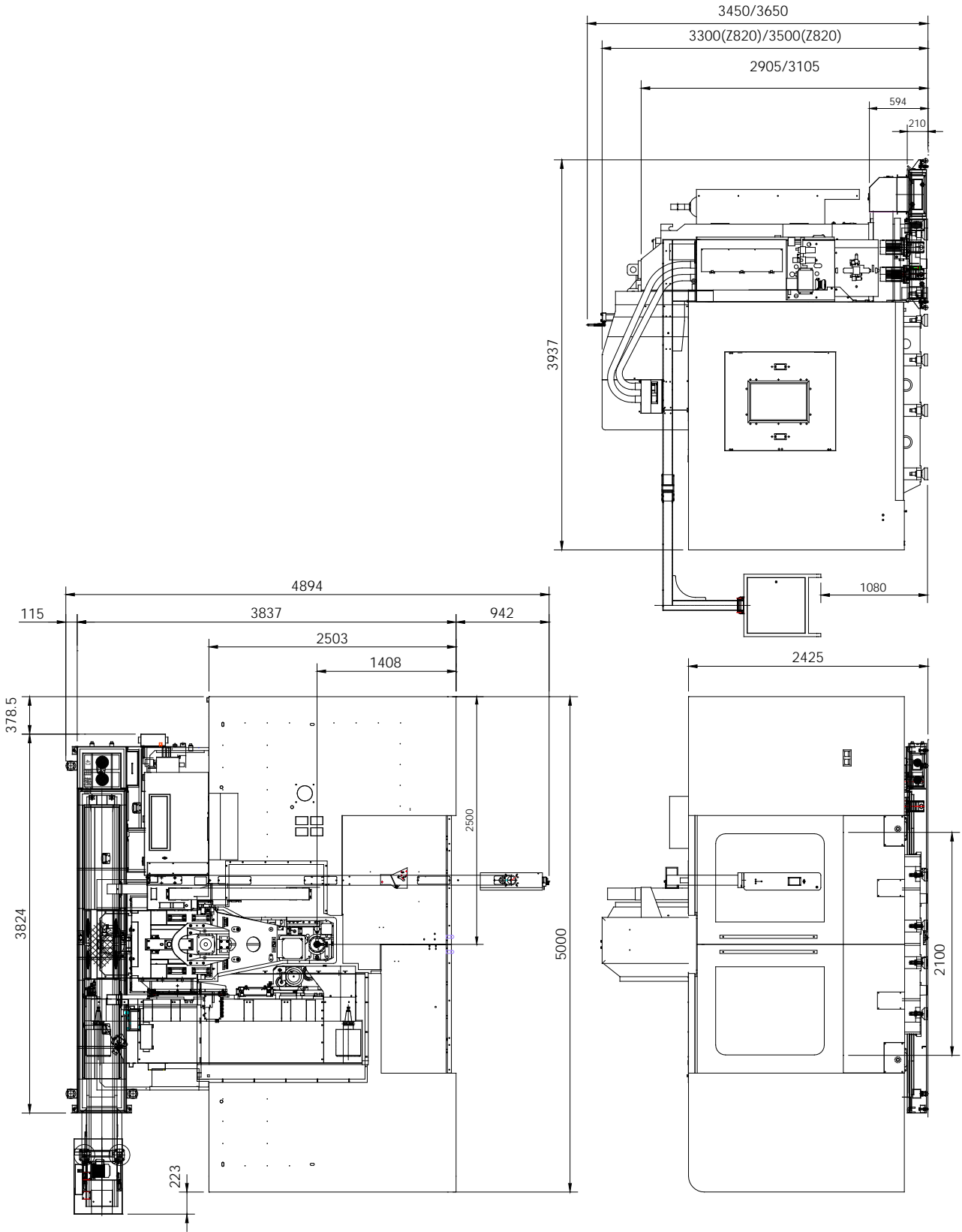
**SM21 10-50/
31 10-50**

**Installation
Packet**

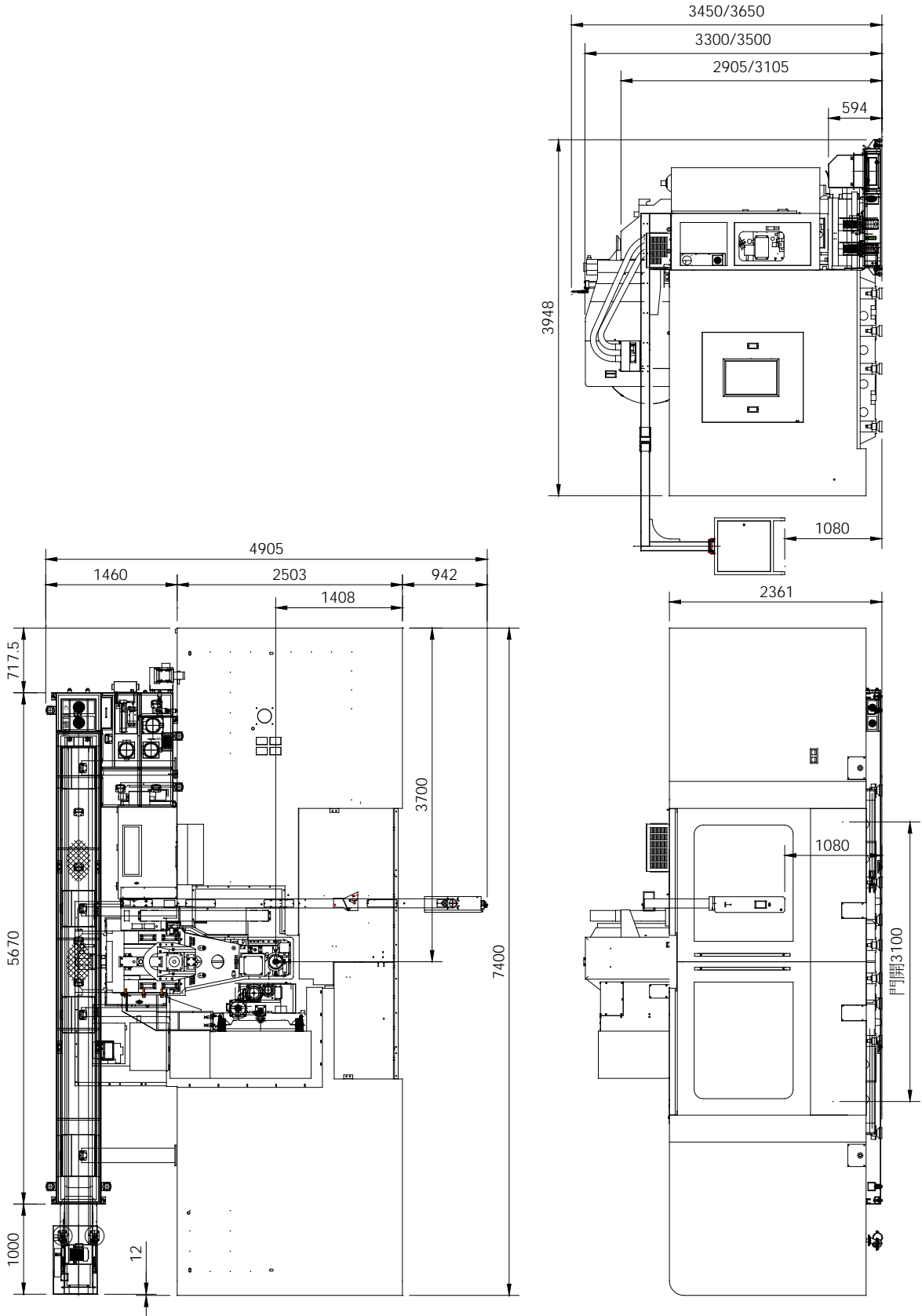
SM-2110-50 Foundation Diagram



SM-2110-50 Link Type Chip Conveyor



SM-3110-50 Link Type Chip Conveyor



Other Specifications

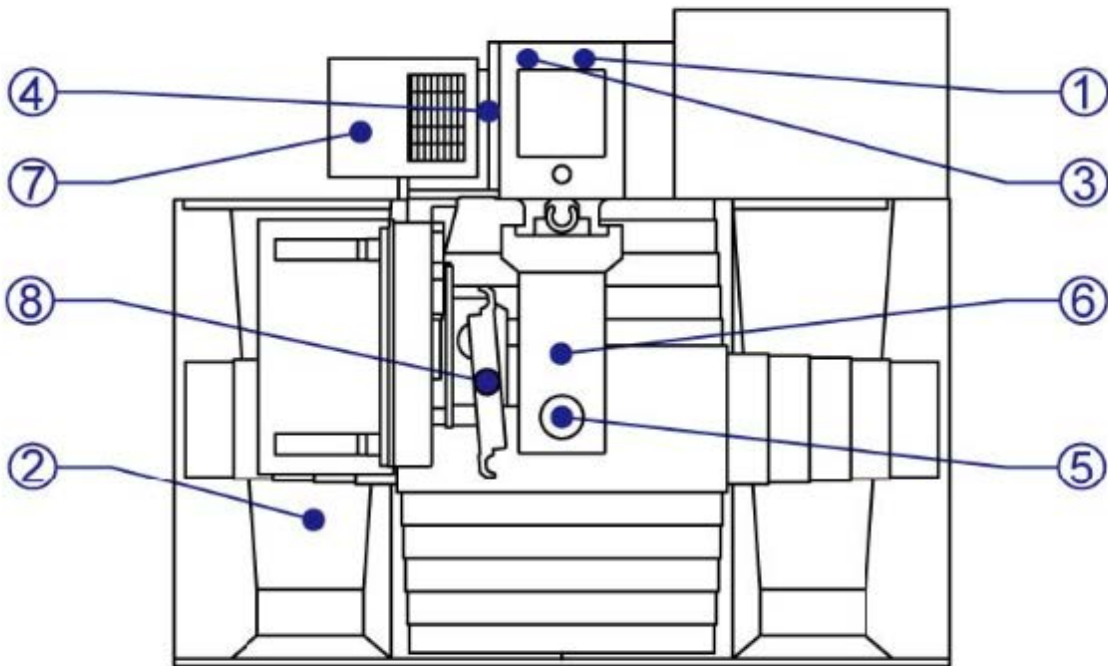
| Item | Unit | SM-2110-50 | SM-3110-50 |
|---|--------------------|--------------------------|--------------------------|
| Source | kg/cm ² | 6.5 | 6.5 |
| Electric power consumption | KVA | 30~50 | 35~55 |
| Net weight | Kg | 15700 | 21300 |
| A24-type Net weight | Kg | 16200 | 21800 |
| A32-type Net weight | Kg | 16600 | 22200 |
| A40-type Net weight | Kg | 17000 | 22600 |
| Distance from Table Surface to Floor | mm | 1000 | 1000 |
| Coolant Capacity | l | 480 | 650 |
| Coolant Capacity | l | 400 | 570 |
| CTS CTS Capacity | l | 20bar: 280 25bar: 550 | 20bar: 280 25bar: 550 |
| (W*L*H) Packing Size (machine in wooden case) | mm | 5300*3990*3850 | 7700*3990*3850 |

Note:

1. Motor brand will be changed by the supplier situation, please prevail in kind.
2. The weight will vary depending on the magazine, the tank and the option.
3. Actual value may vary depending on accessory.

| | | |
|------------------------------|-------------|-----------------|
| Required air pressure | psi | 95 |
| Electrical Power consumption | KVA | 50T=55 40T=40 |
| | Amps @220 V | 50T=144 40T=104 |
| Voltage | | 220V +/- 10% |

Oil Inlet



8112000024-

| No. | Replenishing Point | Oil Type | Oiling Period | Oiling Method |
|---------|------------------------------|------------|---------------------|---|
| 1 | Air Regulator | ISO-VG 32 | Check every day | Fill oil to upper limit of oil gauge |
| 2 | Coolant Tank | / | | |
| 3 | Oil Lubricator | ISO-VG 68 | Warning Alarms | |
| 4 (OP.) | Oil Air Lubricator (#40 G8K) | ISO-VG 32 | | |
| 5 | Booster Cylinder | ISO-VG 32 | Check every 3 month | |
| 6 (OP.) | Gearbox of Head (G) | ISO-VG 32 | Check every day | Fill oil to upper limit of oil gauge. (Change every 6 month to one year.) |
| 7 (OP.) | Spindle Oil Cooler (P.D) | ISO-VG 10 | | |
| 8 (OP.) | ARM Mechanism ATC. | ISO-VG 150 | | |

Required
at
install

*

50T only*

