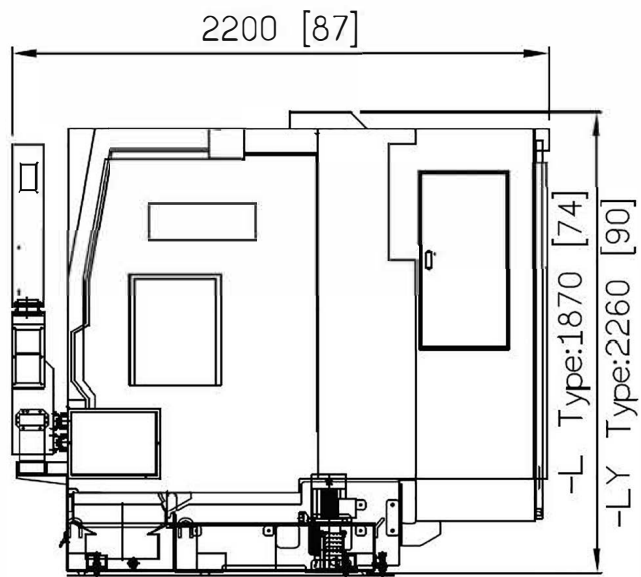


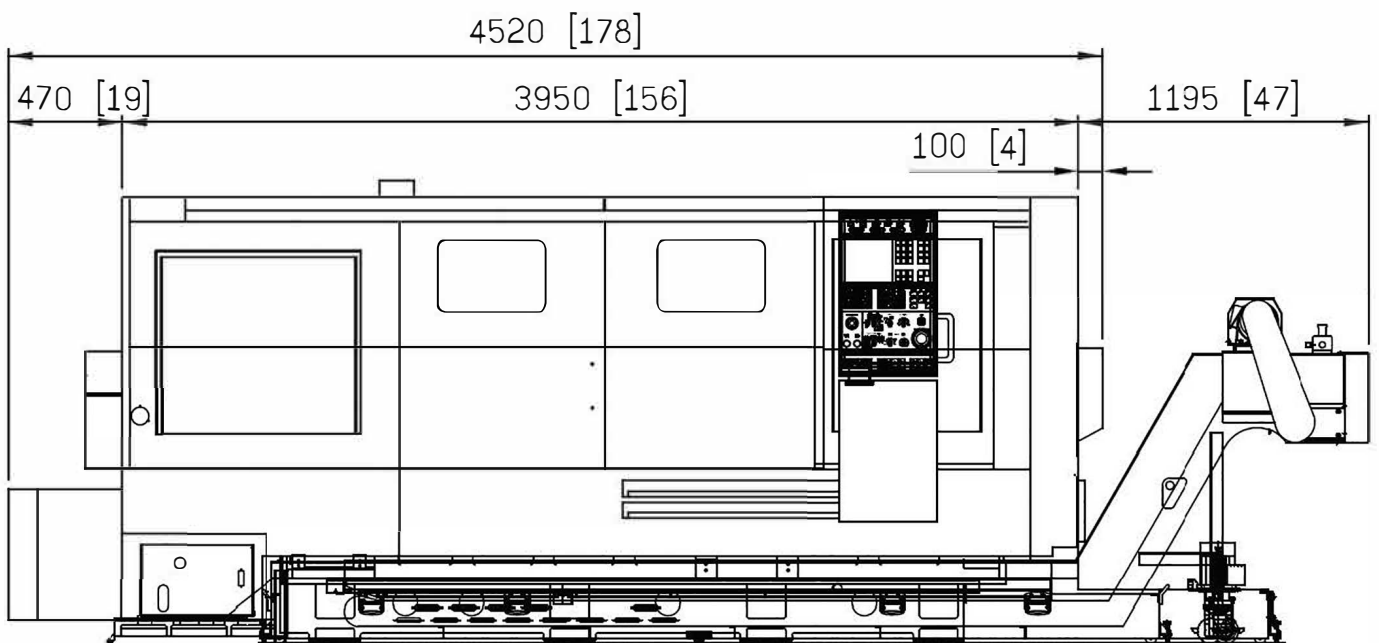
**SMART**  
MACHINE TOOL

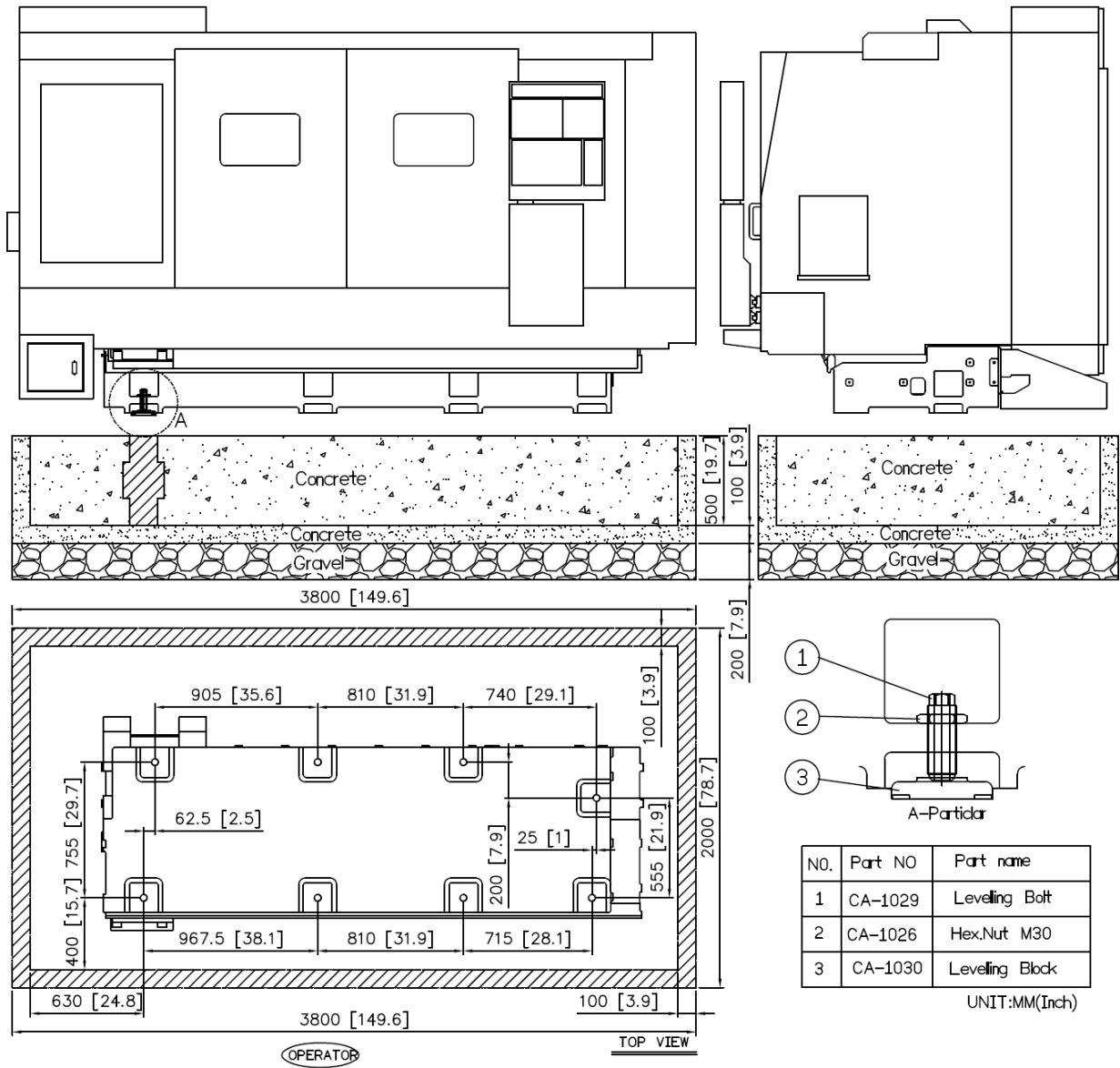
**SL 3600LY**

**Installation  
Packet**



Unit:mm(inch)





Conestoga Trailers arranged by Walsh Logistics required for all machine shipments

Model	Description	ESTIMATED PACKING	
		(Size - FEET)	(Size - LBS)
SL 15	MACHINE	9'7 x 7'6 x 6'11	8,333
SL 20	MACHINE	9'7 x 7'6 x 6'11	8,333
SL 26	MACHINE	9'8 x 7'7 x 6'11	8,333
SL 15M	MACHINE	9'7 x 7'6 x 6'11	8,708
SL 26M	MACHINE	9'8 x 7'7 x 6'11	8,863
SL 15YS	MACHINE	11'11 x 7' x 7'8	8,598
SL 20YS	MACHINE	11'11 x 7'7 x 7'8	8,598
SL15L	MACHINE	12'x7'5"x 7'3"	8,974
SL20L	MACHINE	12'x7'5"x 7'3"	9,074
SL 200	MACHINE	12'10"x7'5"x7'8"	10,099
SL 260(M)	MACHINE	16'5 x 7'5 x 7'4	11,023
SL 280(M)	MACHINE	14' x 7'7 x 6'10	13,029
SL 280L	MACHINE	16'5 x 7'5 x 7'4	13,228
SL30	MACHINE	17.5'x7.5'x7.1'	13,737
SL3300YS	MACHINE	18.2x7.5x8.3	16,755
SL3600LY	MACHINE	19.7'x7.6'x8.2'	22,443
SL 3500	MACHINE	17'3 x 7'7 x 8'	20,613
SL 4500	MACHINE	17'9 x 7'7 x 8'	21,980
SL4500L	MACHINE	21' x 7.5' x 8.4'	32,017
SL4500L	CONVEYOR	16'x7.5'x6'	2,028
SL 5500	MACHINE	23.2'x7.5'8.5'	41,887
SL 5500	CONVEYOR	19'x7.5'6.5'	8,818



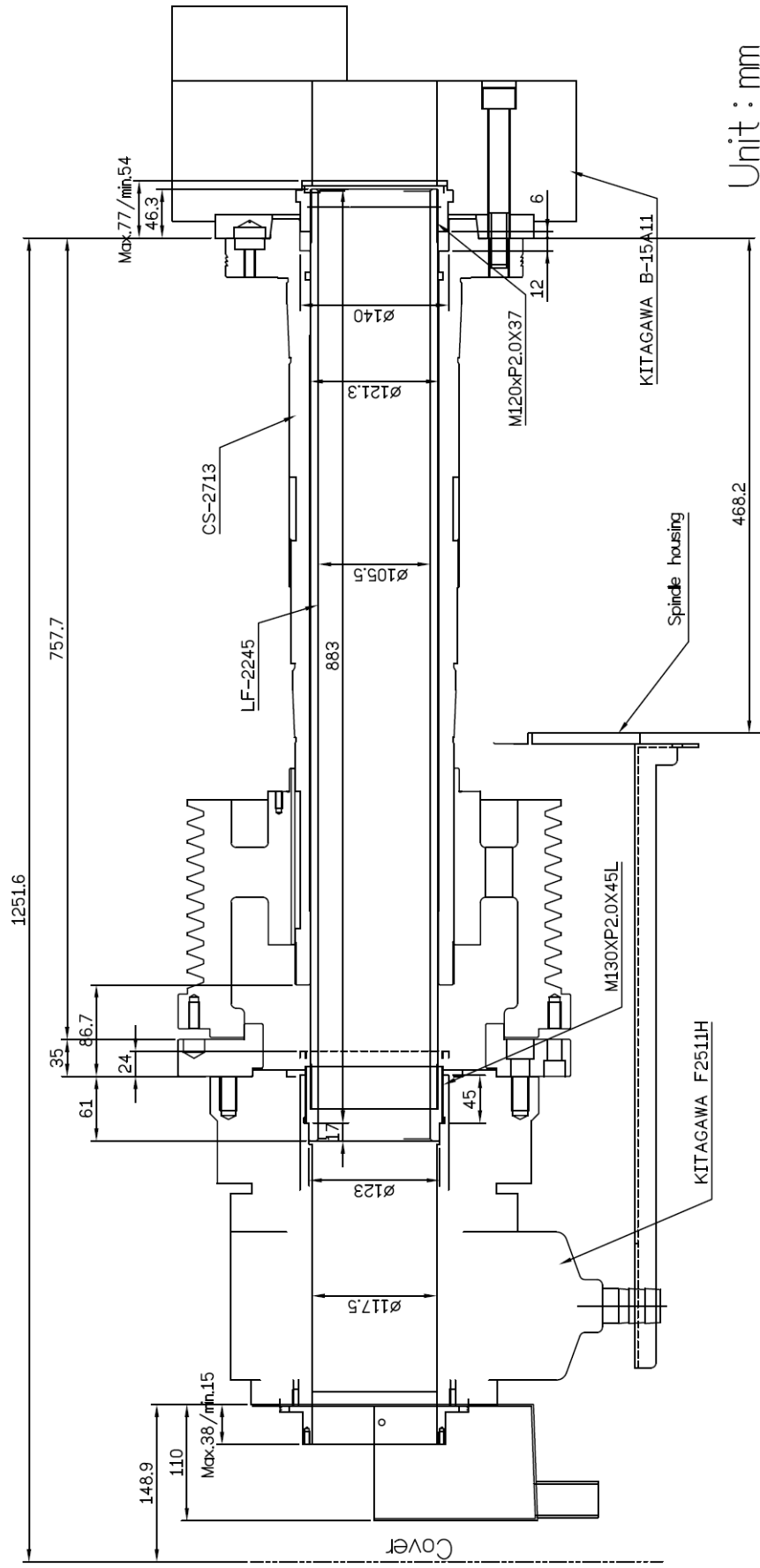


Fig. 2.6.10 GS-3600 Spindle (Bar Capacity  $\phi$  105mm)