



**SM500/800/  
1050**

**Installation  
Packet**

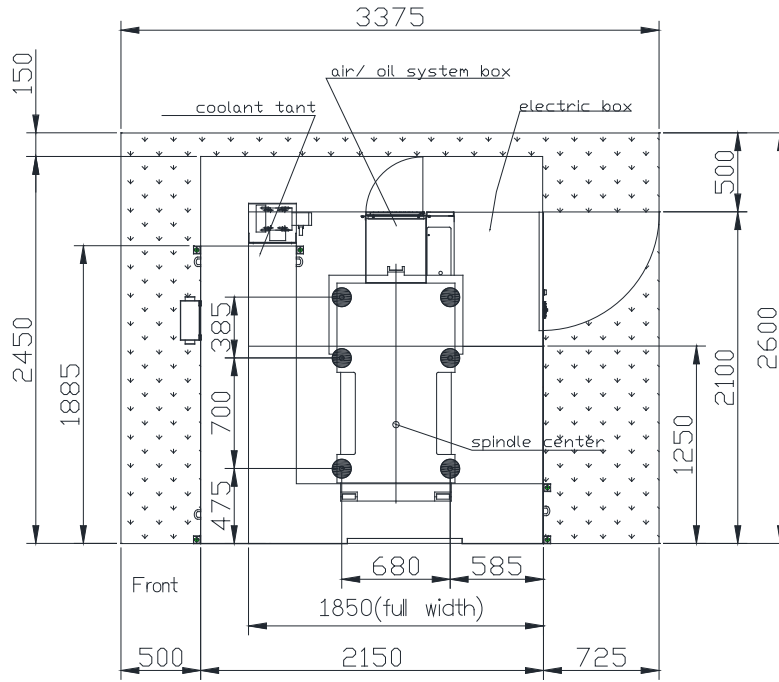
## Other Specifications

Item	Unit	SM500	SM800		SM1050	
		Disk(atc)	斗笠式	刀臂式	斗笠式 Drum	
Air source	kg/cm <sup>2</sup>	6.5	6.5		6.5	
Electric power consumption	KVA	10~25	10~30		10~30	
Net weight	Kg	3330	4270	4300	4410	4530
Machine Height	mm	2400	2900		2900	
Distance from Table Surface to Floor	mm	796	900		900	
Coolant Capacity	l	237	279		306	
CTS CTS Capacity	l	20 bar: 280 L 25 bar: 550 L	20 bar: 280 L 25 bar: 550 L	20 bar: 280 L 25 bar: 550 L	20 bar: 280 L 25 bar: 550 L	20 bar: 280 L 25 bar: 550 L
(W*L*H) Packing Size (machine in wooden case)	mm	2830*2580*2700	3170*2520*2920		3700*2520*2920	
(W*L*H) Packing Size (machine on pallet)	mm	2320*2320*2310	2970*2320*2540		3500*2320*2540	
Floor Space	mm	2150*2100	2960*2501		3500*2501	

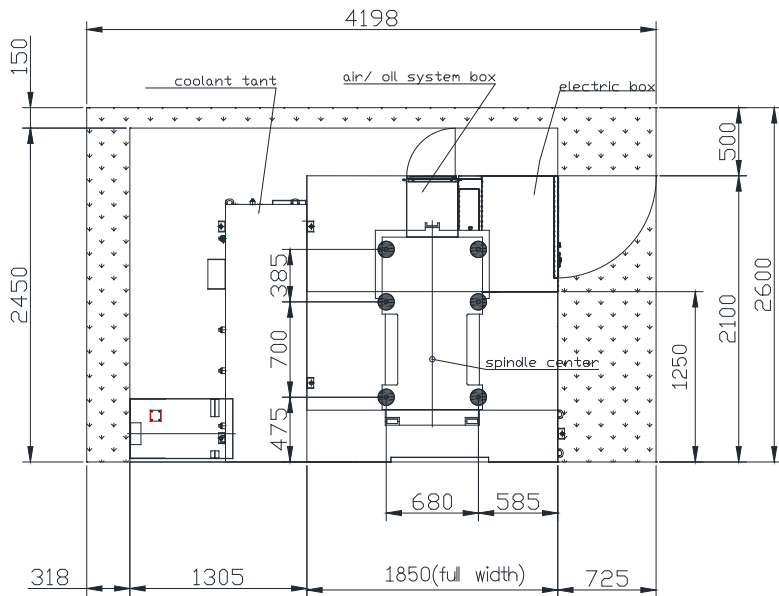
1. The weight will vary depending on the magazine, the tank and the option.
2. Actual value may vary depending on accessory.

**SM500 Foundation Diagram**

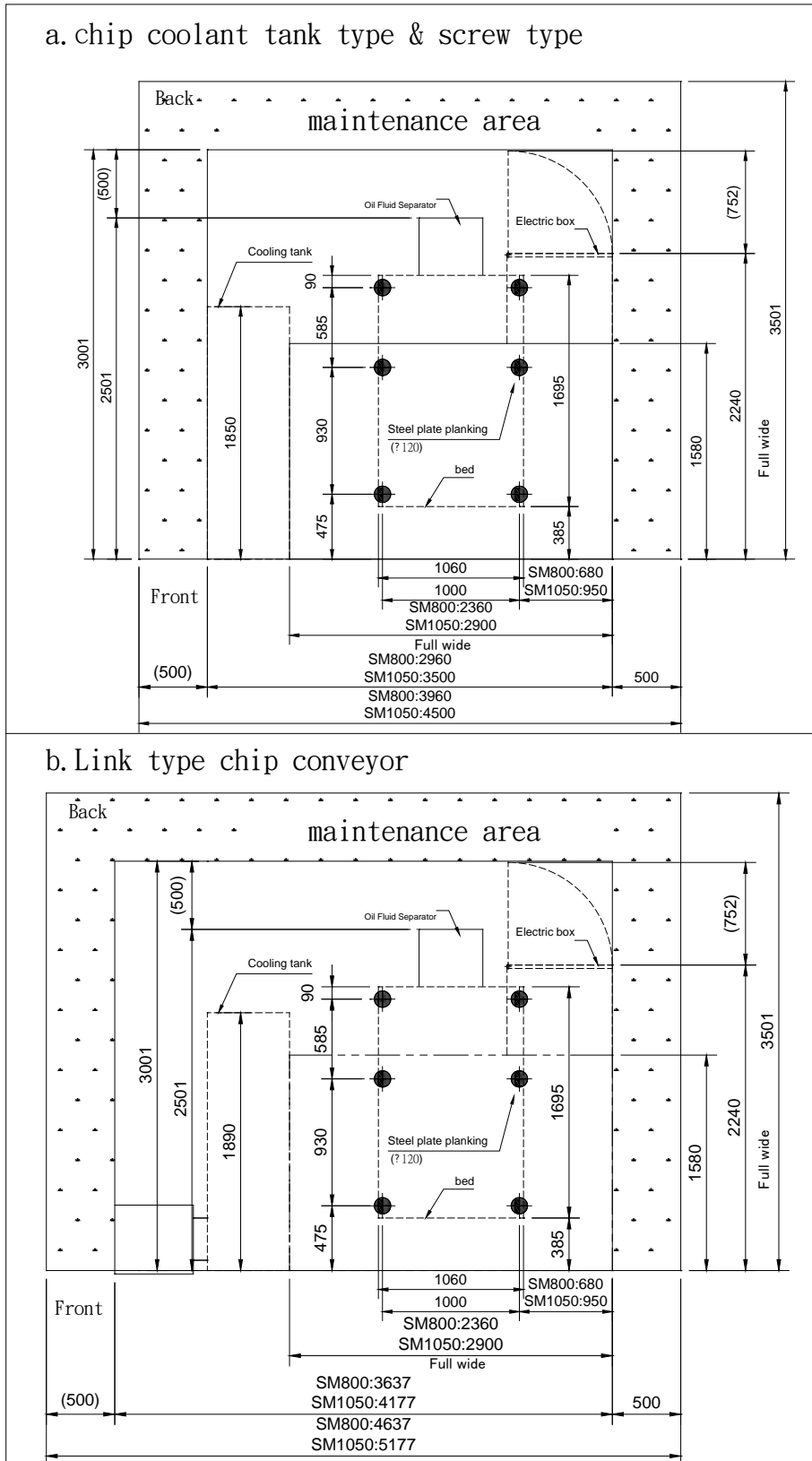
a. SM500 chip coolant tank type & screw type



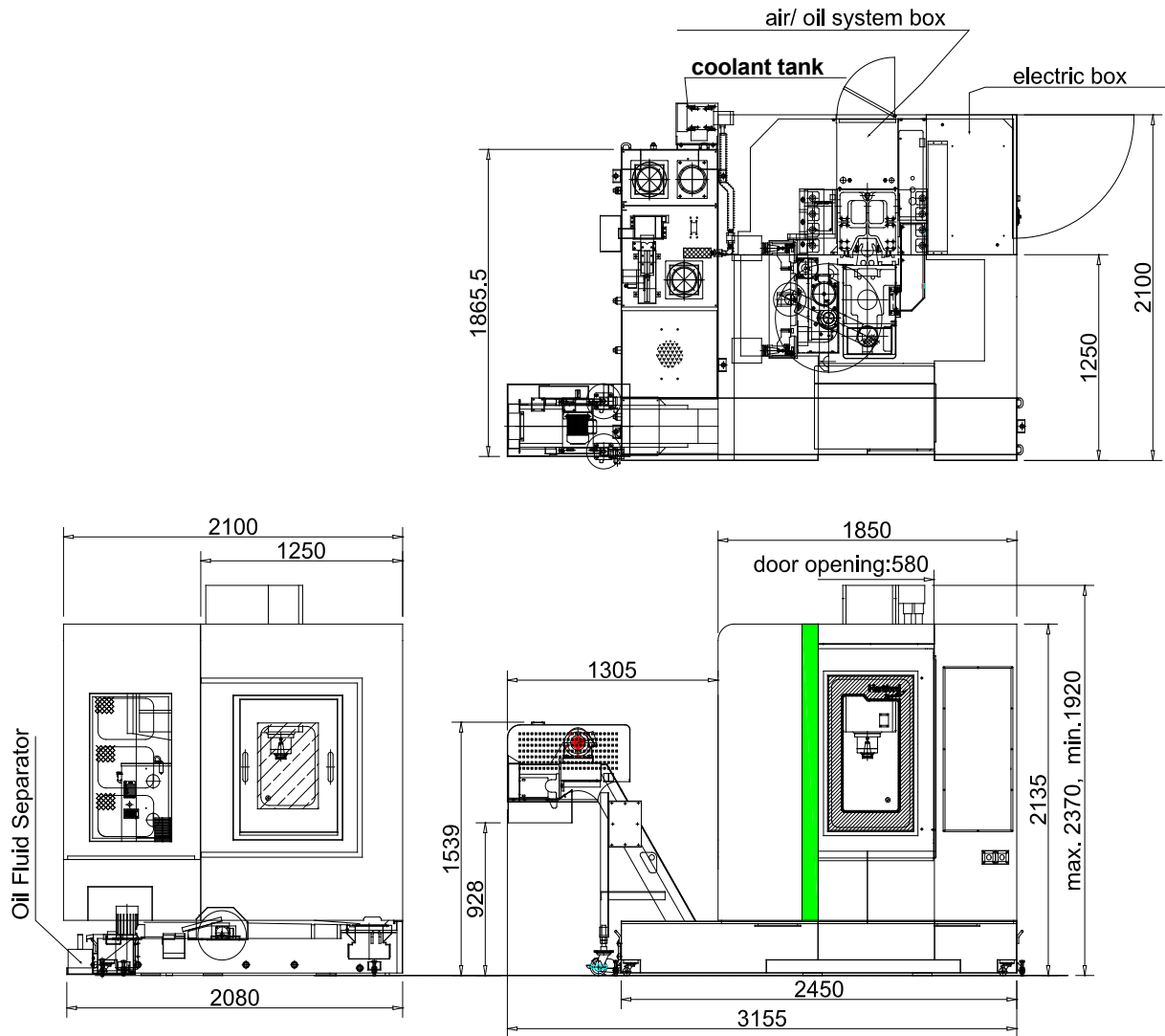
b. SM500 Link type chip conveyor



## SM800/1050 Foundation Diagram



## SM500 Link Type Chip Conveyor Profile Drawing



## SM800/1050 Link Type Chip Conveyor Profile Drawing

