



**SM500/800/
1050**

**Installation
Packet**

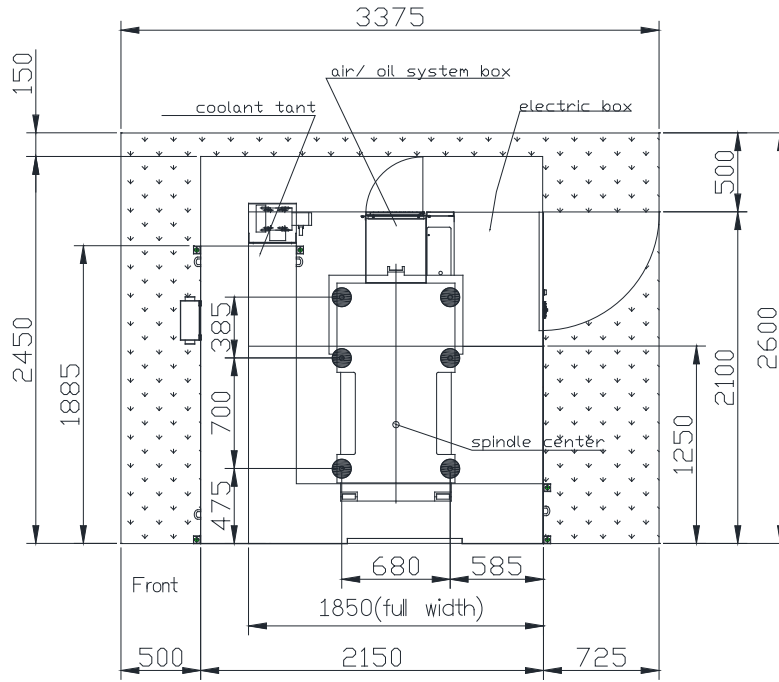
Other Specifications

Item	Unit	SM500	SM800		SM1050	
		Disk(atc)			Drum	
Air source	kg/cm ²	6.5	6.5		6.5	
Electric power consumption	KVA	10~25	10~30		10~30	
Net weight	Kg	3330	4270	4300	4410	4530
Machine Height	mm	2400	2900		2900	
Distance from Table Surface to Floor	mm	796	900		900	
Coolant Capacity	l	237	279		306	
CTS CTS Capacity	l	20 bar: 280 L 25 bar: 550 L	20 bar: 280 L 25 bar: 550 L	20 bar: 280 L 25 bar: 550 L		
(W*L*H) Packing Size (machine in wooden case)	mm	2830*2580*2700	3170*2520*2920		3700*2520*2920	
(W*L*H) Packing Size (machine on pallet)	mm	2320*2320*2310	2970*2320*2540		3500*2320*2540	
Floor Space	mm	2150*2100	2960*2501		3500*2501	

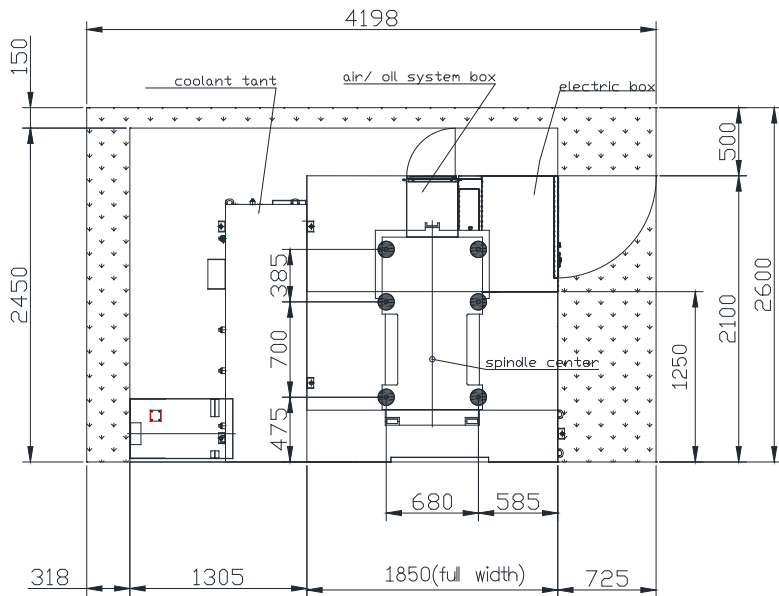
1. The weight will vary depending on the magazine, the tank and the option.
2. Actual value may vary depending on accessory.

SM500 Foundation Diagram

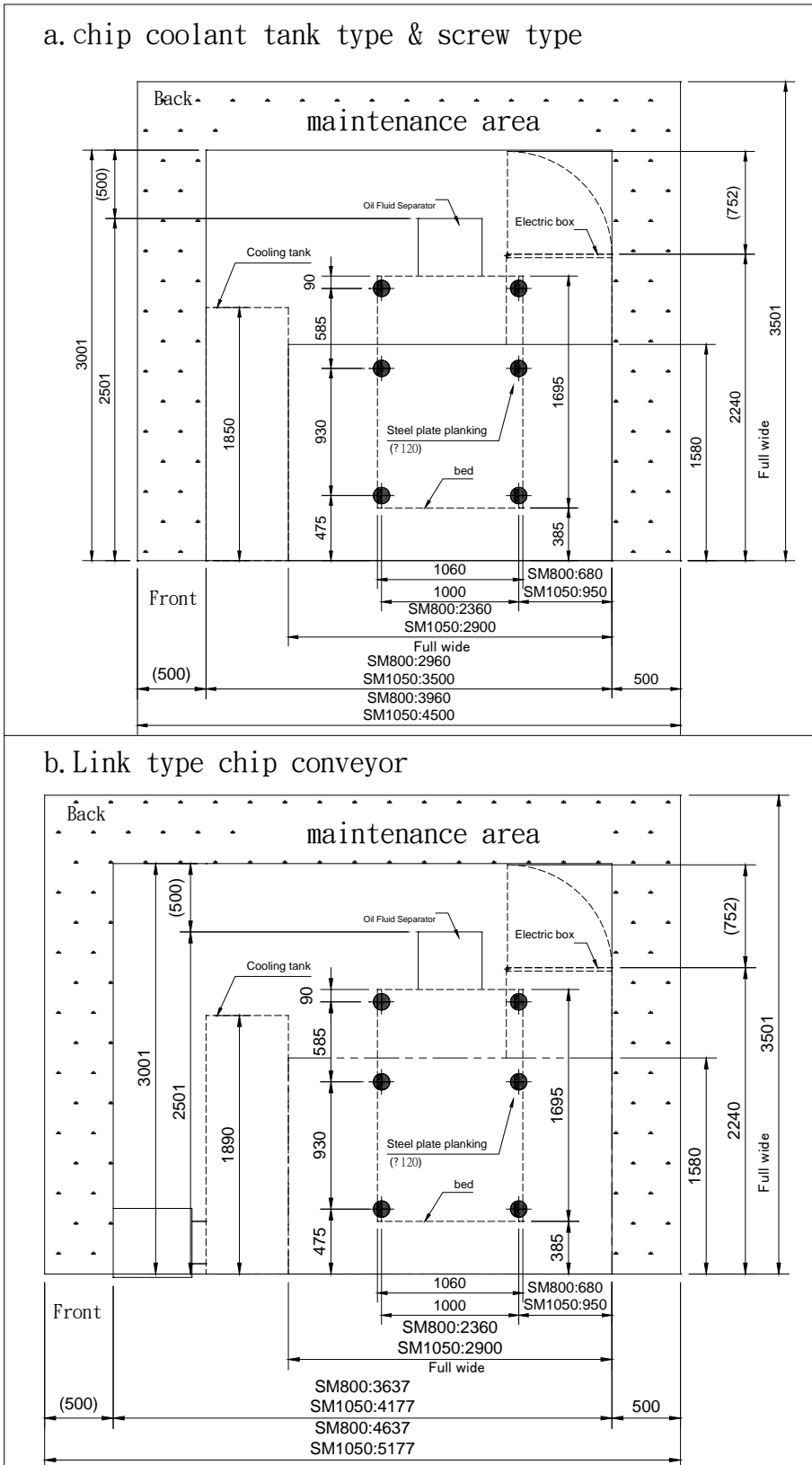
a. SM500 chip coolant tank type & screw type



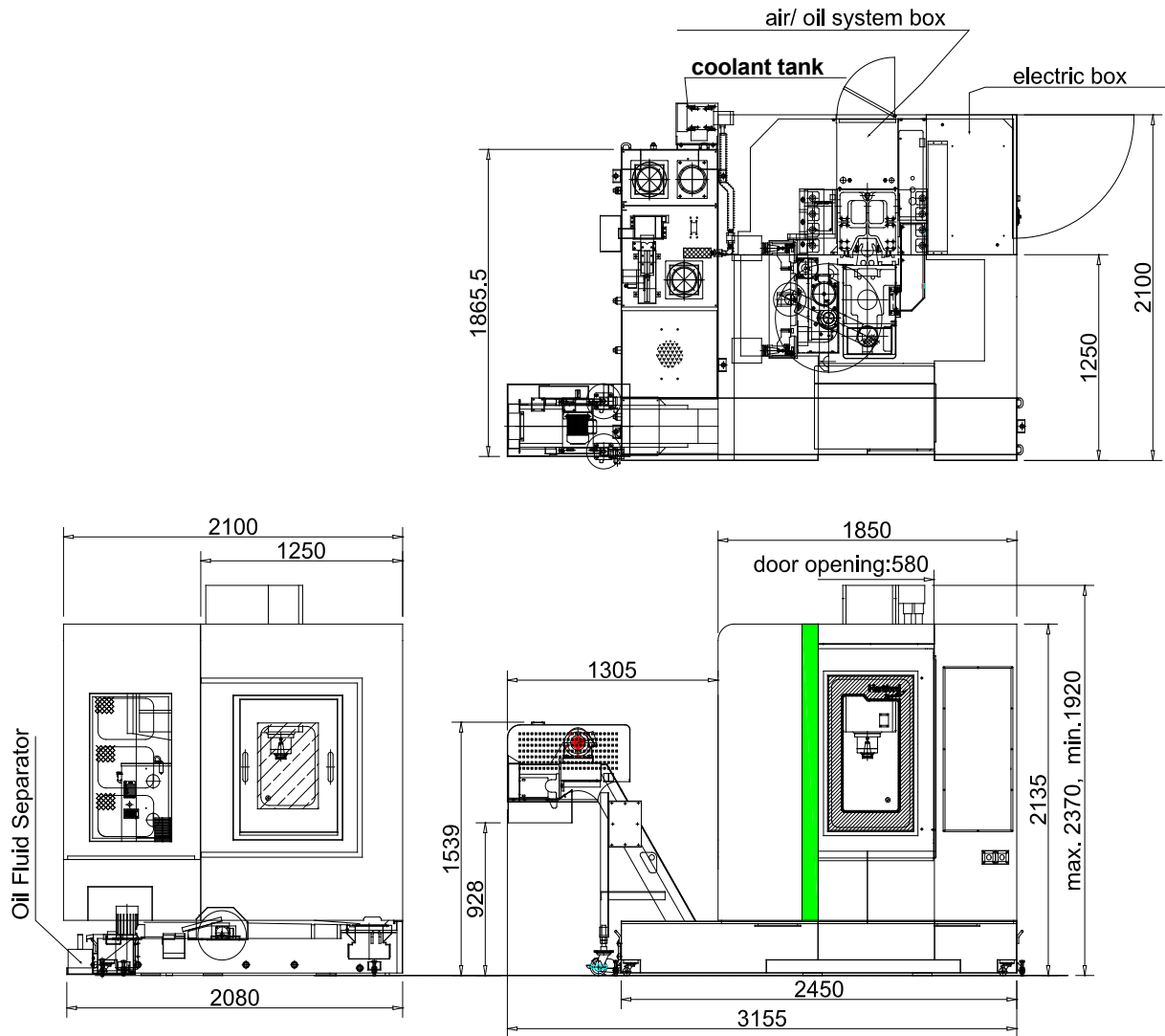
b. SM500 Link type chip conveyor



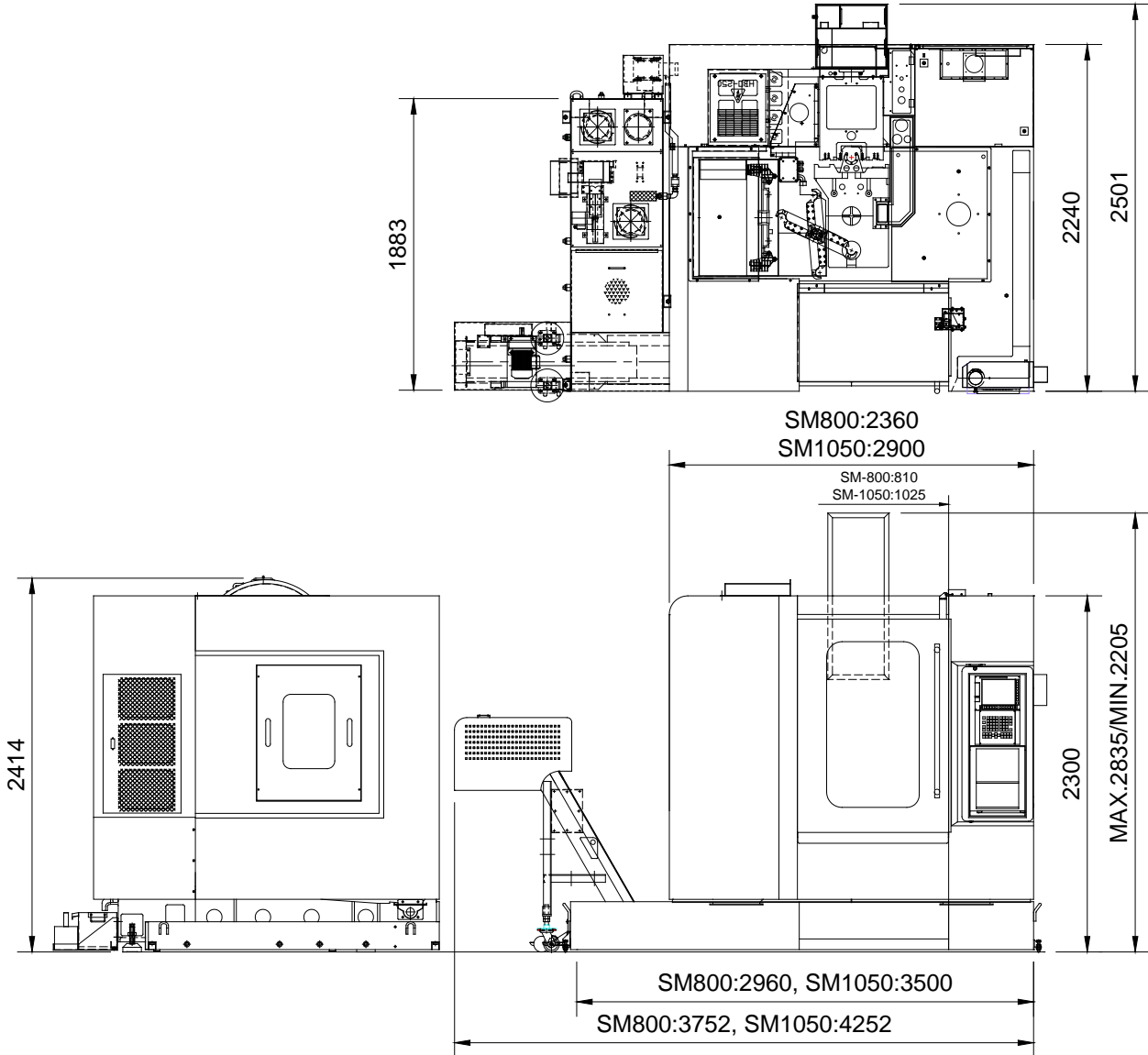
SM800/1050 Foundation Diagram



SM500 Link Type Chip Conveyor Profile Drawing

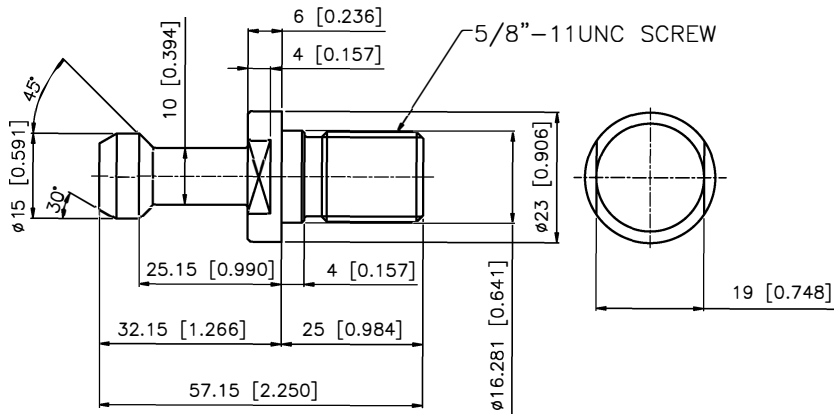


SM800/1050 Link Type Chip Conveyor Profile Drawing



Pull Stud Dimensions

#40



Lyndex PN
Non CTS
C40-4500
CTS
C40-4500H