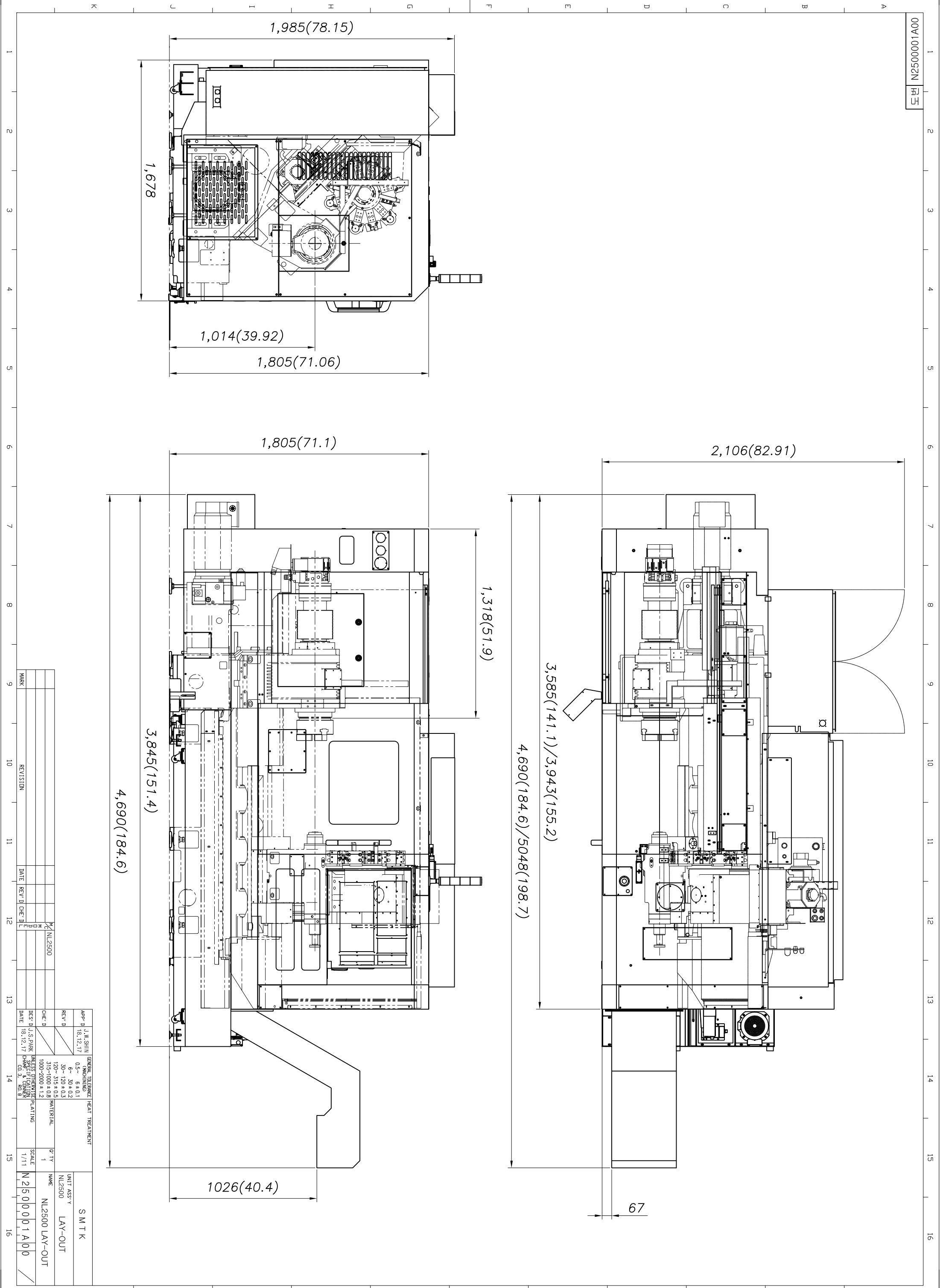


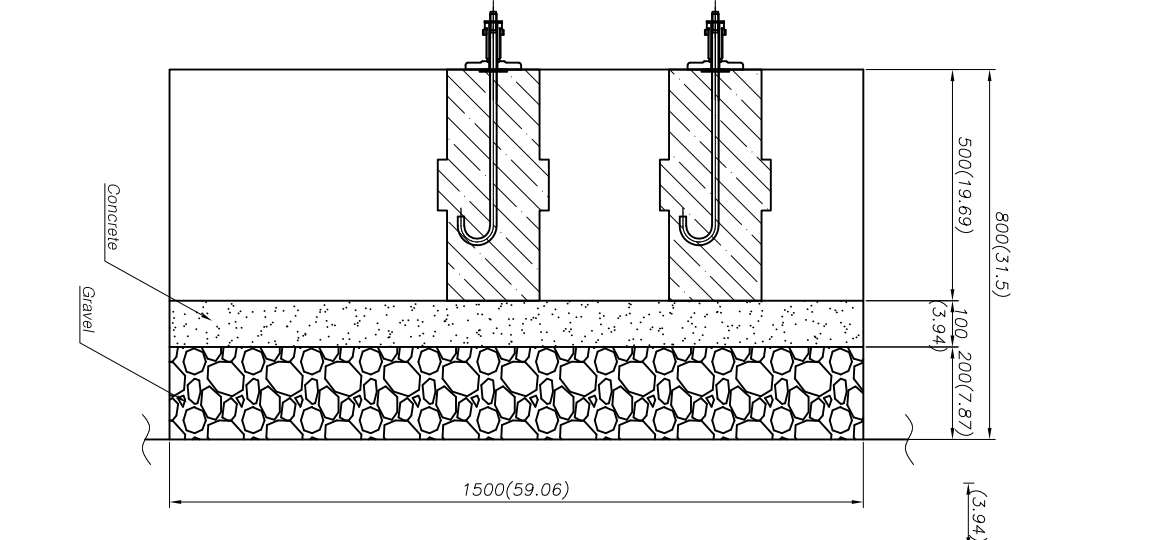
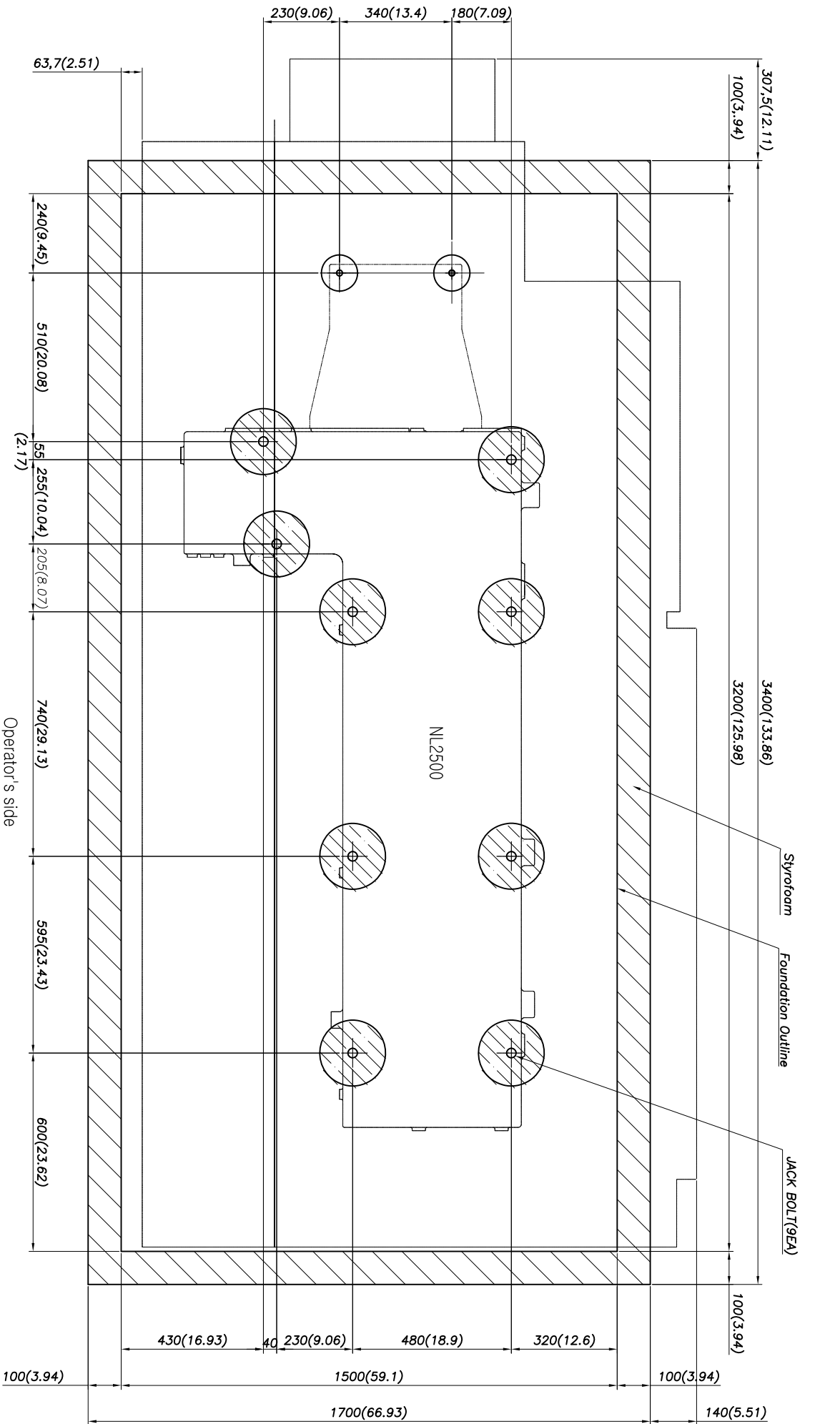
**SMART**  
MACHINE TOOL

**NL 2500**

**Installation  
Packet**



REVISION		DATE	REV'D	CHK'D	APP'D	GENERAL TOLERANCE HEAT TREATMENT		S M T K	
1					J.W. SHIN	0.3 - 30 ± 0.1		UNIT ASS'Y	
2						6 - 30 ± 0.2		LAY-OUT	
3						30 - 120 ± 0.2		N L2500	
4						120 - 315 ± 0.2	MATERIAL	NAME	
5						315 - 1000 ± 0.2		N L2500 LAY-OUT	
6						1000 - 2000 ± 1.2	PLATING		
7					D.E.S. J.S. PARK		CHAMF. & FINISH		
8									
9									
10									
11									
12									
13									
14									
15									
16									



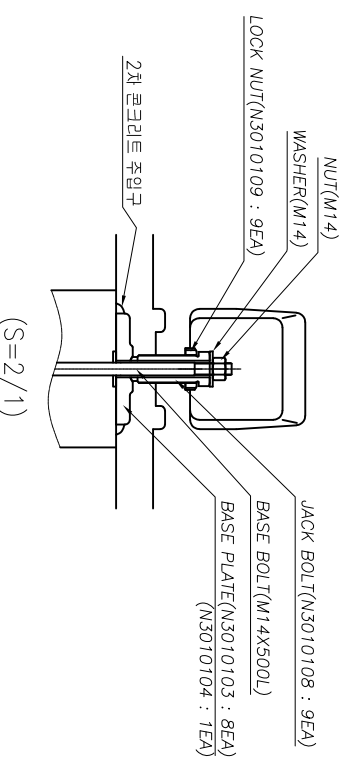
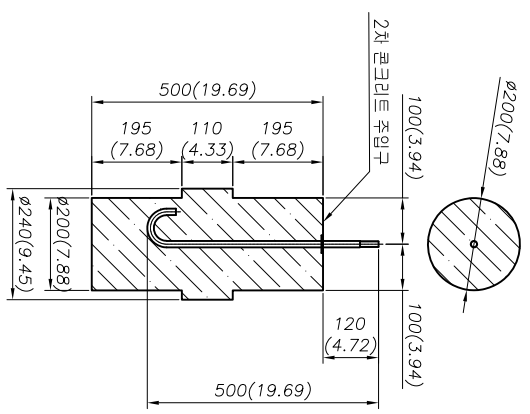
Note1) This drawing shows the standard foundation. Modify the concrete thickness according to ground condition.

Before the first concrete is completely dry, chamfer the area facing the outside of the machine by approximately 100 mm.

Concrete strength (28 days after placing concrete) should be 20.6 Mpa(2986.2 psi) or more.

Note2) Because 100 mm(3.94 inch) of styrofoam must adhere to the inside surface of ditch, dig the foundation 100 mm(3.94 inch) outside of the outline of the foundation.

Note3) Unit : mm(inch)



MARK		REVISION		DATE		REV'D	CHE' D	DATE		REV'D	CHE' D	DATE		REV'D	CHE' D	DATE		REV'D	CHE' D	DATE		REV'D	CHE' D
<p>GENERAL TOLERANCE: HEAT TREATMENT</p> <p>FINISHING</p> <p>0.5~ 6 ± 0.1</p> <p>6~ 30 ± 0.2</p> <p>30~ 120 ± 0.3</p> <p>120~ 315 ± 0.5</p> <p>315~ 1000 ± 0.8</p> <p>1000~ 2000 ± 1.2</p>																							
UNIT ASS'Y	SMTK																						
LAY-OUT	SMTK																						
FOUNDATION ASS'Y	SMTK																						
SCALE	1/8	SCALE	N 25 0 0 0 6 A 0 0																				

K  
J  
I  
H  
G  
F  
E  
D  
C  
B  
A

1  
2  
3  
4  
5  
6  
7  
8  
9  
10  
11  
12  
13  
14  
15  
16

4/24/2018 MACHINE MODEL	KVA	AMPS @ 220	Coolant	Slideways	Hyd. Unit	Transmission	Chuck
NL2000(M)	31	82	48	.79 gal	5.3 gal	n/a	.2 oz daily
NL2500(M)	40	105	53	.79 gal	5.3 gal	0.75	.2 oz daily
NL3000(M)	40	105	63	.79 gal	5.3 gal	0.75	.2 oz daily
NL4000(M)	55	144	63	.79 gal	6.4 gal	0.75	.2 oz daily
NL5000(M)	55	144	63	.79 gal	6.4 gal	0.75	.2 oz daily
NL5000L(M)	65	170	130	.79 gal	6.4 gal	0.75	.2 oz daily
NL6000(M)	65	170	105	.79 gal	15 gal	0.75	.2 oz daily
NL6000L(M)	65	170	150	.79 gal	15 gal	0.75	.2 oz daily
NL7000L(M)	65	170	150	.79 gal	15 gal	2 gal	.2 oz daily
NL7000XL(M)	65	170	180	.79 gal	15 gal	2 gal	.2 oz daily
				Shell Oil T68	Mobil DTE 24	Mobil Oil Light	grease daily
				Mobil Vactra#2		ISO VG 32	
				check daily	check daily	check daily	

Conestoga Trailers arranged by Walsh Logistics required for all machine shipments

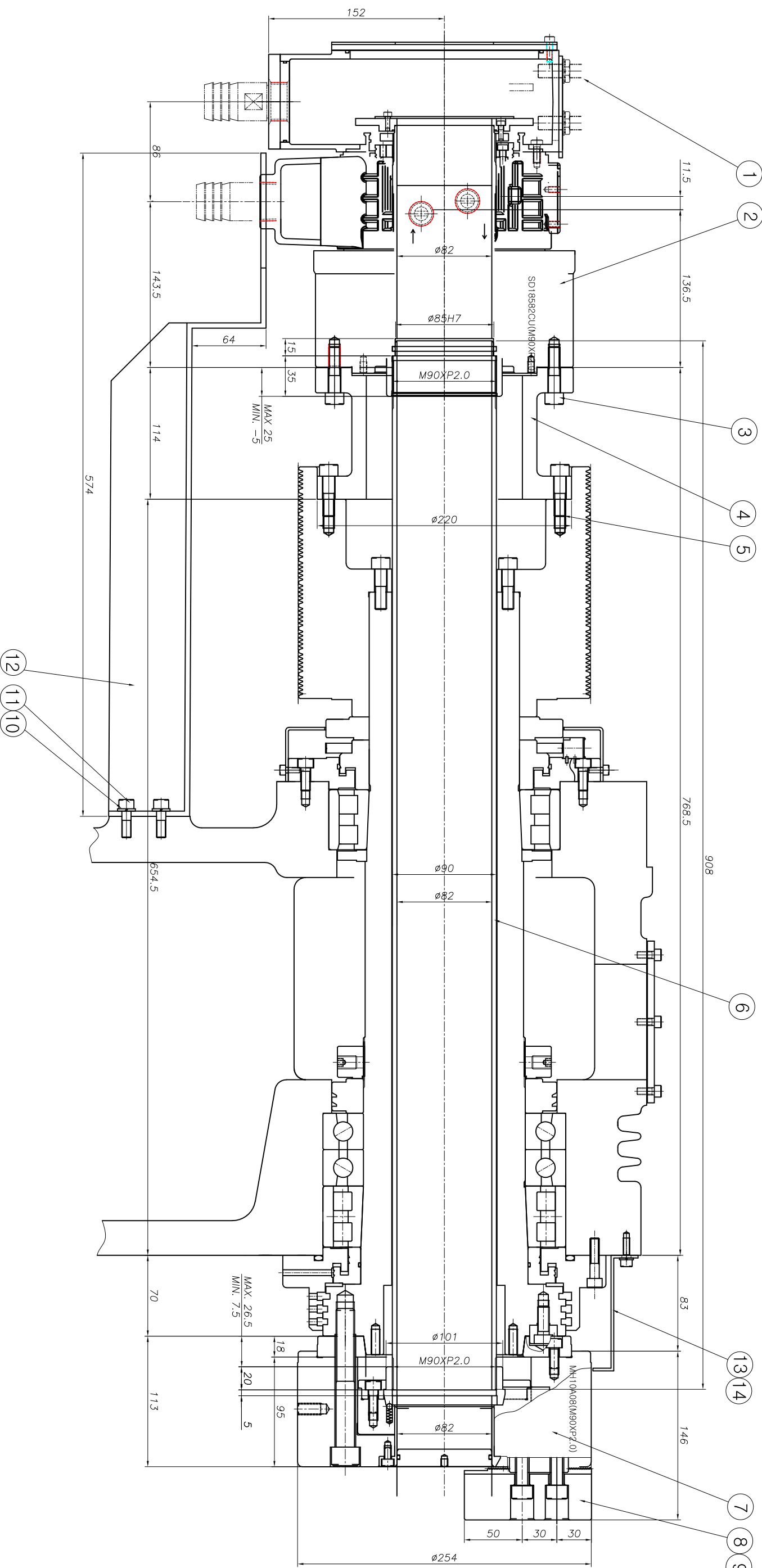
Model	Description	ESTIMATED PACKING	
		(Size - FEET)	(Size - LBS)
NL2000(M)	MACHINE	13x7.5x7.5	10,500
NL2500(M)	MACHINE	14.5x7.5x7	13,900
NL2500(M)	CHIP CONVEYOR	12.5x3x5	850
NL3000(M)	MACHINE	15.5x7.5x7	16,500
NL3000(M)	CHIP CONVEYOR	12.5x3x5	870
NL4000(M)	MACHINE	16x7.5x8	25,000
NL4000(M)	CHIP CONVEYOR	14x3.1x5	1,925
NL5000(M)	MACHINE	16x7.5x8	25,500
NL5000(M)	CHIP CONVEYOR	14x3.1x5	1,925
NL5000L(M)	MACHINE	20x7.5x8	32,000
NL5000L(M)	CHIP CONVEYOR	18x3.1x5	2,500
NL6000(M)	MACHINE	18.7x7.5x8.4	35,250
NL6000(M)	CHIP CONVEYOR	15.9x7.5x5.75	2,350
NL6000L(M)	MACHINE		
NL7000L(M)	MACHINE		
NL7000XL(M)	MACHINE		

00V0010652N

CYLINDER SPECIFICATION	
CYLINDER INSIDE DIAMETER	188 mm
PISTON STROKE	30 mm
PISTON THRUST	PUSH (8700 kgf) PULL (8100 kgf)
유압력 (40.8 kgf/cm <sup>2</sup> )	7.9 KN (8100 kgf) 4.5 MPa (45 bar)
최고유압력	4800 rpm
최고회전수	28kgf
WEIGHT	0.11 kg·m <sup>2</sup>
Moment of inertia	3.5 liter/min
DRAIN 양	ISO.VG.32, 50° 3.0MPa

CHUCK SPECIFICATION	
PLUNGER STROKE	19 mm
JAW STROKE (직경)	8.8 mm
PLUNGER 허용추력	4676kgf (46kN)
최대 피어력	12848kgf (128.6kN)
최고 회전수	4500 r.p.m.
WEIGHT (SOFT JAW 부착)	36 kgf
G·D <sup>2</sup> (SOFT JAW 부착)	0.329 kgf·m <sup>2</sup>
최고 회전중 피어력	3.350kgf
사용 CYLINDER	SD-18582
최대 설정 유압력	28 kg/cm <sup>2</sup>

NO.	DWG NO.	NAME	MAT'L	Q'TY	REMARK
1	N2590805A00	PROXIMITY SWITCH		2	FL7M-3J6HD-C
2	N2590802A00	HYD. CYLINDER		1	SD18582CU+18CS
3	S0211040	SOCKET HEAD BOLT		12	M10X40
4	N2590101A00	CYLINDER ADAPTOR	SM45C	1	
5	S0211035	SOCKET HEAD BOLT		8	M10X35
6	N2590102A00	DRAW PIPE	STKM13C	1	
7	N2590801A00	HYD. CHUCK		1	MH10A08(M90XP2.0)
8	N2590803A00	HARD JAW		1	SB10B1
9	M2590804A00	SOFT JAW		3	HB10A1
10	S0210825	SOCKET HEAD BOLT		4	M8X25
11	S2530800	SPRING WASHER		4	M8
12	N2590103A00	BRACKET	SS400	1	
13	N2590104A00	CHUCK COVER	SCP1	1	
14	S0210612	SHB		3	M6X12



NOTE

- NL2500 10" HOLLOW CHUCK 사양임.
- CHUCK & CYLINDER SPEC. (삼원리)
  - 2.1 HYD. CHUCK : MH210A08(M90XP2.0)
  - 2.2 HYD. CYLINDER : SD18582CU+SD-18CS(M90XP2.0)
- 주축관통경  $\phi$ 91, 4,300rpm 사양임.

MARK	REVISION	DATE	REV'D	CHE' D	DATE	REV'D	CHE' D	DATE	REV'D	CHE' D	DATE	REV'D	CHE' D	DATE	REV'D	CHE' D

APP'D	DATE	GENERAL TOLERANCE	HEAT TREATMENT	UNIT ASS'Y
J.W. SHIN	2018.12.19	0.5- 6 ± 0.1		S M T K
REV'D		30- 120 ± 0.2		NL2500
CHE' D		120- 315 ± 0.3		CHUCK
		315-1000 ± 0.5		10" HOLLOW CHUCK ASS'Y
		1000-2000 ± 1.2		

DES' D	DATE	DESIGNER	CHECKER	SCALE
J.S. PARK	2018.12.19	CHANG	Y. KIM	1/1.5