

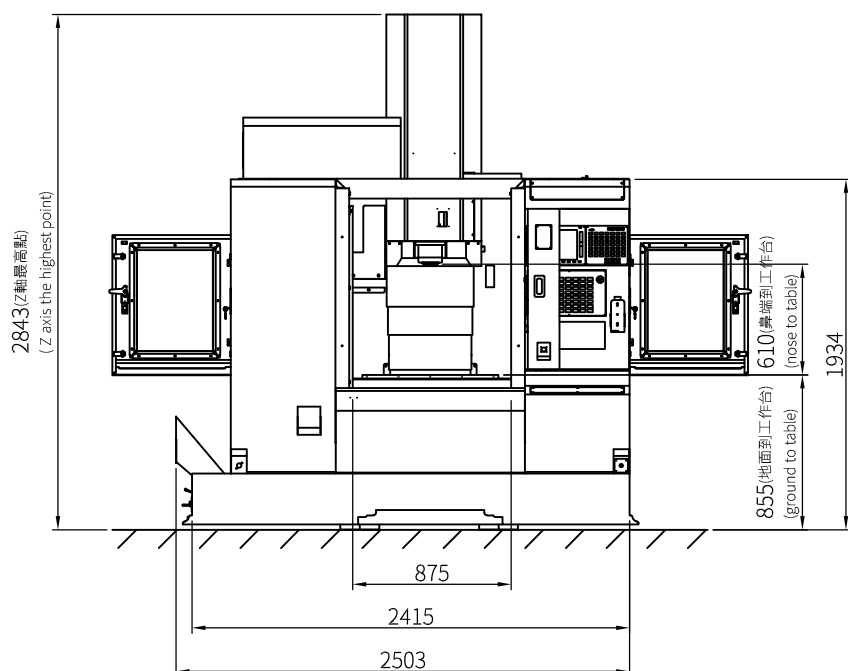
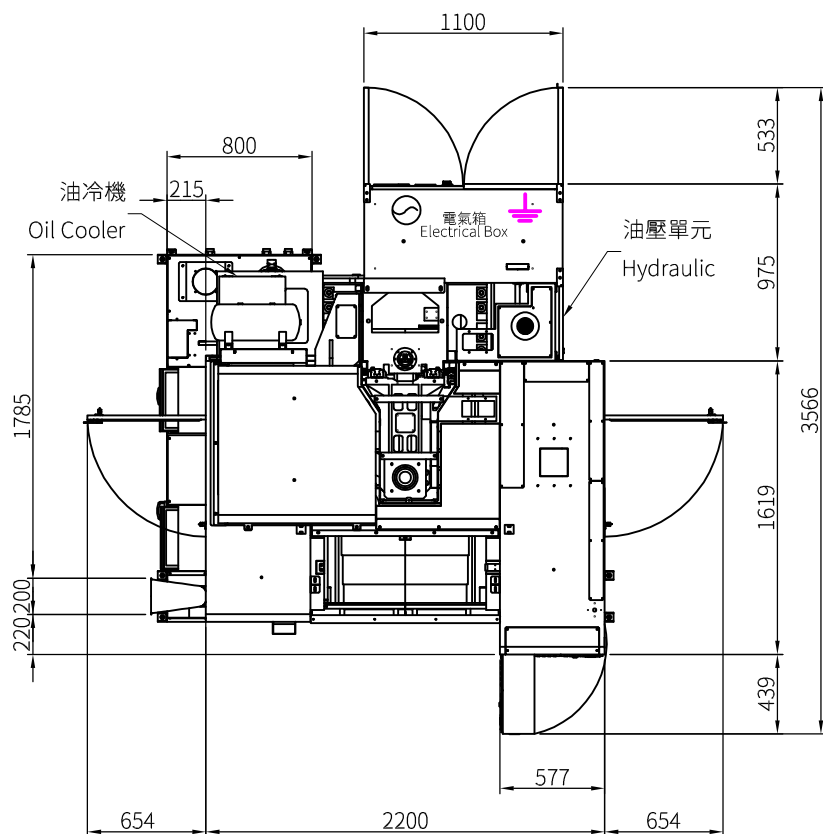


**SM 600**

**Installation  
Packet**

# AE650/760, 外型尺寸圖 / 螺旋轉子

件號: AFS6008-1



⊕ 電源接線  
POWER SUPPLY

⊙ 氣壓源入口  
AIR PRESSURE SOURCE

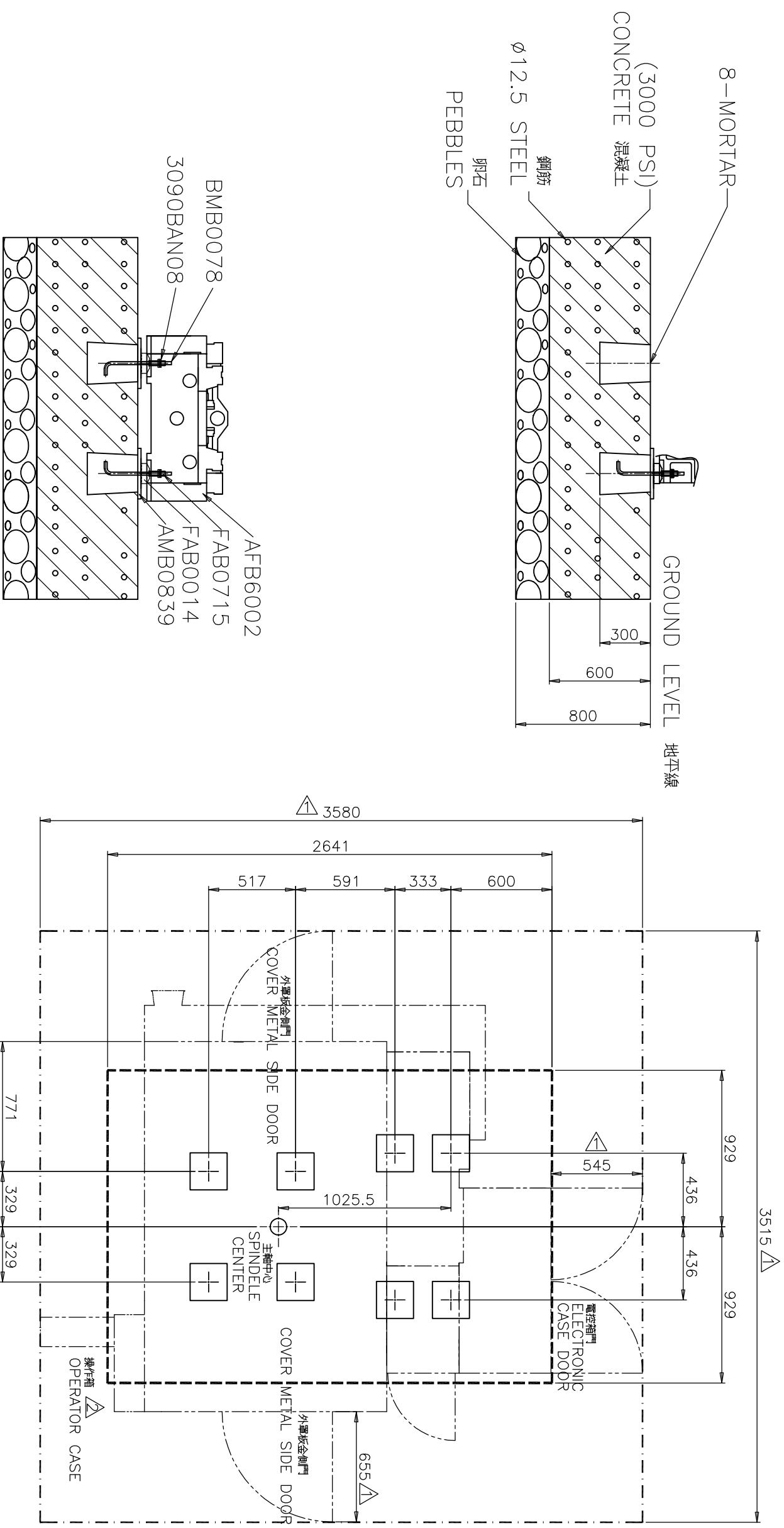
為使機器接地達到良好效果  
請以 $\varnothing 22 \times 1.8$ 米長銅打入地面  
並確認銅棒確實埋入土壤之中  
最後並以此銅棒作為機器接地之用  
(最終接地阻抗需小於 $10\Omega$ 以下)

Keep the machine contact with the ground well  
Please insert a  $22 \times 1.8$  meter copper rod  
into the ground and confirm that is finished.  
The copper rod is the ground wire.  
(Ground impedance must be less than  $10\Omega$ .)



# AE650/760, 地基圖 / 螺旋轉子水箱

件號: AFS6001-2



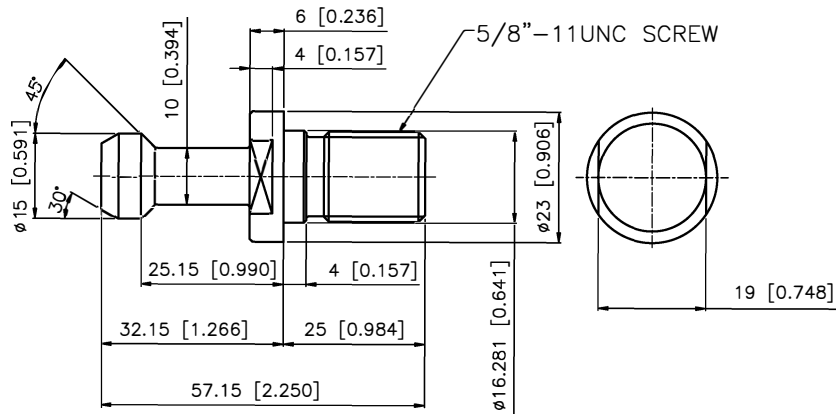
--- SPECIAL FOUNDATION  
地基範圍

--- MORTAR FOR FOUNDATION SCREWS  
埋設地腳螺絲用預留洞

--- AREA OF MACHINE BASE  
機械本體佔地範圍

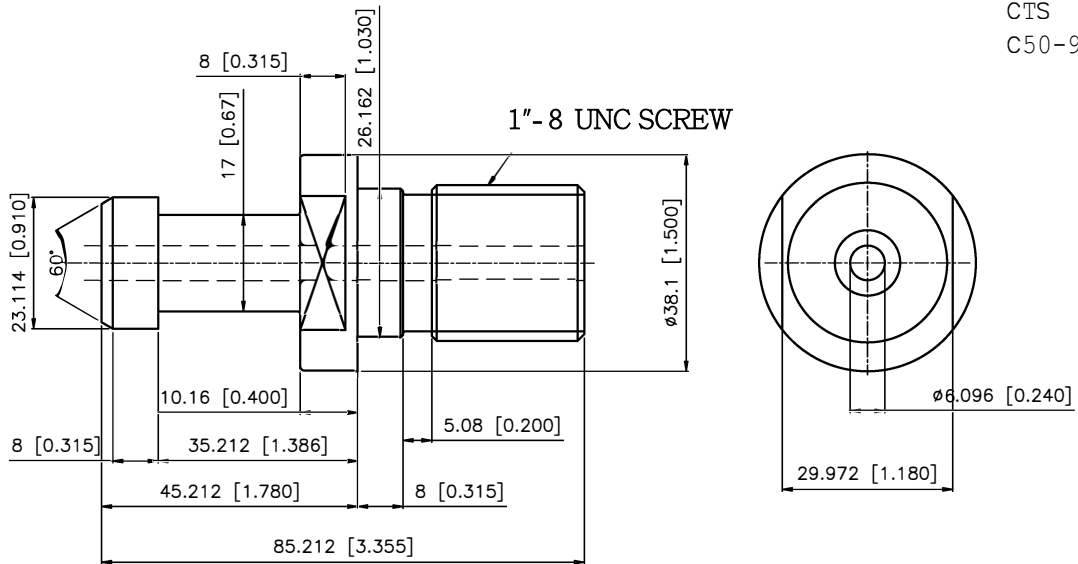
--- SUGGEST MIN WORKING AREA  
操作範圍

#40



Lyndex PN  
Non CTS  
C40-4500  
CTS  
C40-4500H

#50



Lyndex PN  
Non CTS  
C50-9000  
CTS  
C50-9000H

**POWER AND LUBRICATION REQUIREMENTS**

| 10/1/2018<br>MACHINE MODEL | KVA | AMPS @ 220 | Coolant | Slideways            | Chilled Gearing<br>Headstock | Oil for Air     | Chiller<br>OilTank   |
|----------------------------|-----|------------|---------|----------------------|------------------------------|-----------------|----------------------|
|                            |     |            |         |                      |                              |                 |                      |
| <b>SM850</b>               | 25  | 65         | 87 gal  | 6L                   | N/A                          | 6oz             | 20L                  |
| <b>SM1000</b>              | 25  | 65         | 89 gal  | 6L                   | N/A                          | 6oz             | 20L                  |
| <b>SM1688</b>              | 45  | 118        | 116 gal | 6L                   | 20L                          | 6oz             | N/A                  |
| <b>SM2600</b>              | 50  | 131        | 360 gal | 6L                   | 20L                          | 6oz             | N/A                  |
|                            |     |            |         | Shell Tonna<br>S3M68 |                              | Mobil DTE Light | Mobil Velocite<br>#3 |
| <b>SM600</b>               | 25  | 65         | 85 gal  | 4.5L                 | N/A                          | 6oz             | 20L                  |
| <b>SM1000</b>              | 25  | 65         | 85 gal  | 4.5L                 | N/A                          | 6oz             | 20L                  |
| <b>SM965 8K</b>            | 25  | 65         | 95 gal  | 4.5L                 | 1.2 gal                      | 6oz             | N/A                  |
| <b>SM965 12K</b>           | 40  | 104        | 95 gal  | 4.5L                 | N/A                          | 6oz             | 20L                  |
| <b>SM1165 8K</b>           | 25  | 65         | 99 gal  | 4.5L                 | 1.2 gal                      | 6oz             | N/A                  |
| <b>SM1165 12K</b>          | 40  | 104        | 99 gal  | 4.5L                 | N/A                          | 6oz             | 20L                  |
| <b>SM1165 6K</b>           | 40  | 104        | 99 gal  | 4.5L                 | 1.2 gal                      | 6oz             | N/A                  |
| <b>SM1365 6K</b>           | 40  | 104        | 103 gal | 4.5L                 | 1.2 gal                      | 6oz             | N/A                  |
| <b>SM1365 12K</b>          | 40  | 104        | 103 gal | 4.5L                 | N/A                          | 6oz             | 20L                  |
| <b>SM1565 12K</b>          | 40  | 104        | 105 gal | 4.5L                 | N/A                          | 6oz             | 20L                  |
| <b>SM1565 6K</b>           | 40  | 104        | 105 gal | 4.5L                 | 1.2 gal                      | 6oz             | N/A                  |
| <b>SM1575 12K</b>          | 40  | 104        | 105 gal | 4.5L                 | N/A                          | 6oz             | 20L                  |
| <b>SM800APC</b>            | 30  | 78         |         | 4.5L                 | N/A                          | 6oz             | 20L                  |
|                            |     |            |         | Shell Tonna<br>S3M68 | Mobil DTE 24                 | Mobil DTE Light | Mobil Velocite<br>#6 |
|                            |     |            |         | check daily          | check daily                  | check daily     | check daily          |

**MCV Series:**

Air: 8 CFM @ 80-100 PSI

Air Fitting Size: 5/8 DIA. MINIMUM ID

**Conestoga Trailers arranged by Walsh Logistics required for machine shipments**

| Model  | Description                                     | ESTIMATED PACKING    |              |
|--|---|----------------------|--------------|
|  |   | (Size - INCHES)      | (Size - LBS) |
| SM600  | MACHINE   | 11.25' x 7.6' x 8.4' | 10,913       |
| SM850  | MACHINE   | 9'2 x 7'7 x 8'1      | 9,259        |
| SM850  | ACCESSORIES                                     | 9' x 7'3 x 3'1       | 1,003        |
| SM1000                                       | MACHINE   | 9'7 X 7'7 X 8'6      | 12,787       |
| SM1000                                       | ACCESSORIES                                     | 10'5 X 7'3 X 6'5     | 1,874        |
| SM1000(NEW)                                  | MACHINE   | 13x7.6x8.4'          | 15,983       |
| SM965-24T                                    | MACHINE   | 11'2 x 7'7 x 8'3     | 15,783       |
| SM965-36T                                    | MACHINE   | 16'1 X 7'7 X 8'2     | 15,783       |
| SM965-36T                                    | TOOL MAGAZINE                                   | 3'1 X 3'8 X 4'2      | 1,433        |
| SM1165-24T                                   | MACHINE   | 12'3 X 7'7 X 8'3     | 15,432       |
| SM1165-36T                                   | MACHINE   | 16'1 X 7'7 X 8'2     | 15,432       |
| SM1165-36T                                   | TOOL MAGAZINE                                   | 3'1 X 3'8 X 4'2      | 1,433        |
| SM1165-30T                                   | MACHINE   | 16'1 X 7'7 X 8'3     | 16,424       |
| SM1165-30T                                   | TOOL MAGAZINE                                   | 3'7 x 5'5 x 5'5      | 1,984        |
| SM1365-36T                                   | MACHINE   | 16'3 X 7'7 X 8'1     | 16,555       |
| SM1365-36T                                   | TOOL MAGAZINE                                   | 3'1 X 3'8 X 4'2      | 1,433        |
| SM1365-30T                                   | MACHINE   | 16'3 X 7'7 X 8'1     | 16,755       |
| SM1365-30T                                   | TOOL MAGAZINE                                   | 3'7 X 5'4 X 5'6      | 1,984        |
| SM1565-36T                                   | MACHINE   | 17'8 x 7'7 x 8'1     | 18,078       |
| SM1565-36T                                   | TOOL MAGAZINE                                   | 3'1 X 3'8 X 4'2      | 1,433        |
| SM1565-30T                                   | MACHINE   | 17'8 x 7'7 x 8'1     | 18,298       |
| SM1565-30T                                   | TOOL MAGAZINE                                   | 3'7 x 5'5 x 5'5      | 1,984        |
| SM1575-36T                                   | MACHINE   | 13.25'x7.6'x7.6'     | 19,000       |
| SM1575-36T                                   | TOOL MAGAZINE                                   | 3'7 x 5'5 x 5'5      | 1,984        |
| SM1688                                       | MACHINE & ACCESSORIES                           | 17'9 X 13'6 X 11'3   | 42,064       |
| SM2600                                       | MACHINE   | 17'9"x13'2"x13'      | 47,399       |
| SM2600                                       | ACCESSORIES                                     | 18'1"x7'6"x6'5"      | 5,512        |
| SM2600                                       | ACCESSORIES                                     | 15'9"x7'6"x7'8"      | 7,716        |
| SM800-APC                                    | MACHINE   | 11'9 x 7'7 x 8'3     | 16,535       |
| SM800-APC                                    | ACCESSORIES(tool magazine, chip conveyor, etc.) | 13' x 7'6 x 6'4      | 3,616        |
| SM212  | MACHINE & ACCESSORIES                           | 18'10 x 12'4 x 12'2  | 39,551       |
| SM312  | MACHINE & ACCESSORIES                           | 26'1 x 12'4 x 12'2   | 49,493       |
| Conestoga not required for SM1688 and SM2600 |   |                      |              |