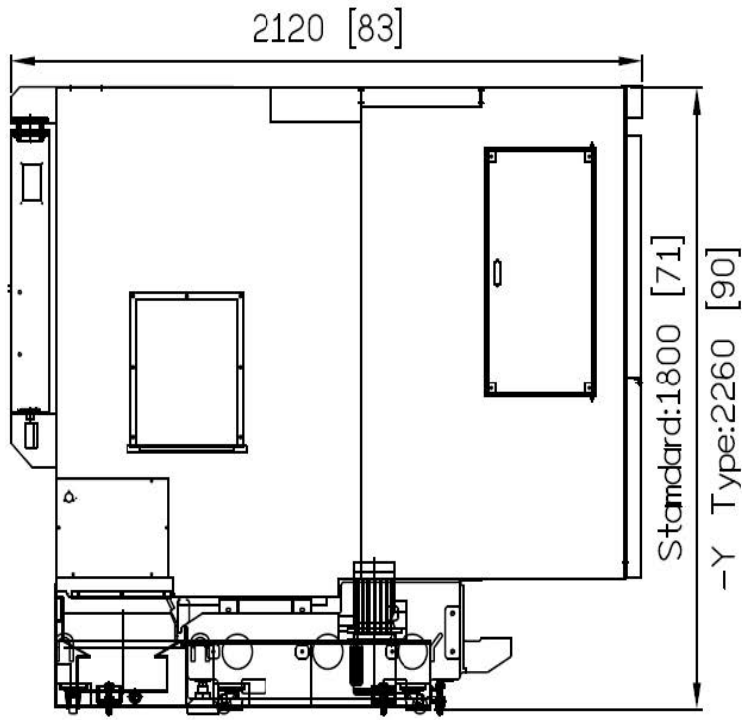


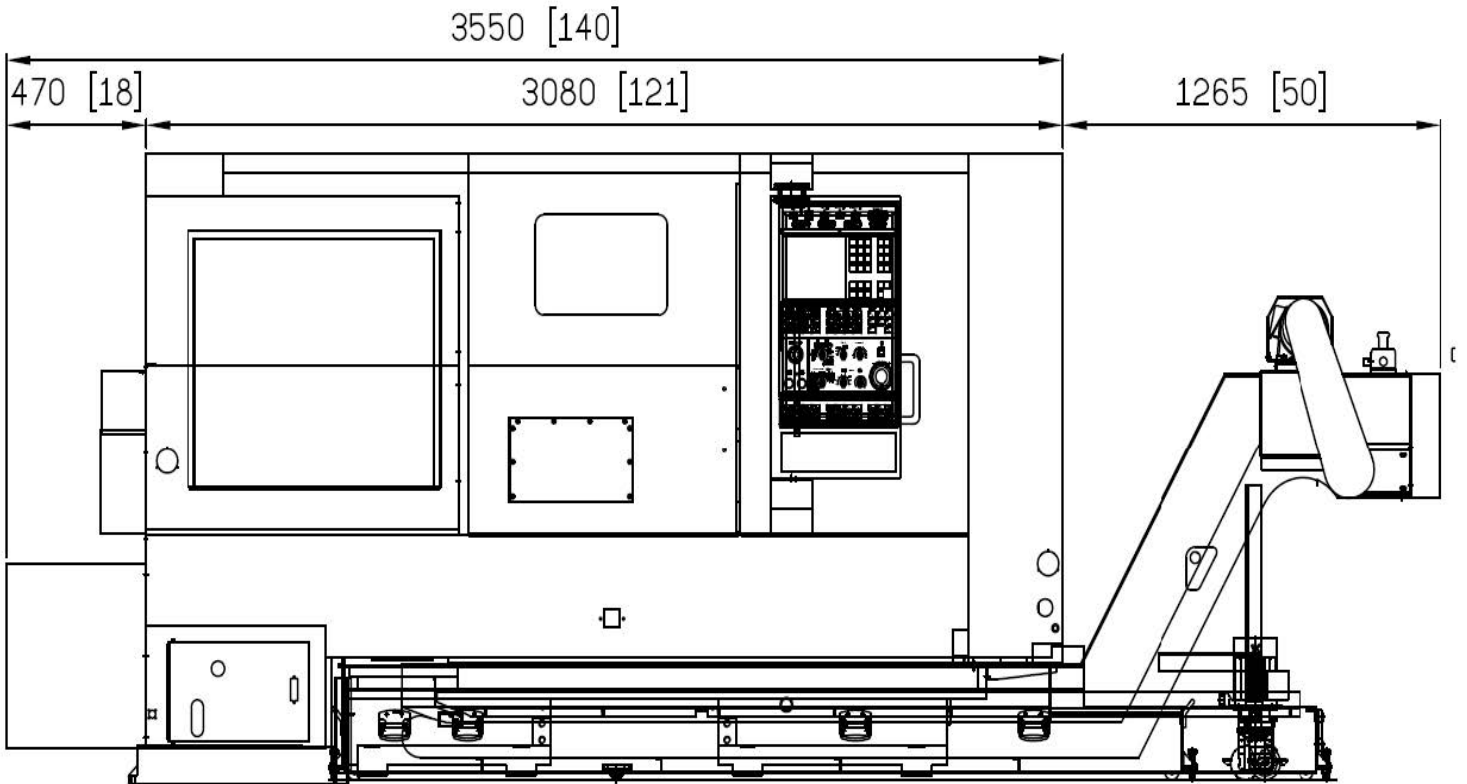
SMART
MACHINE TOOL

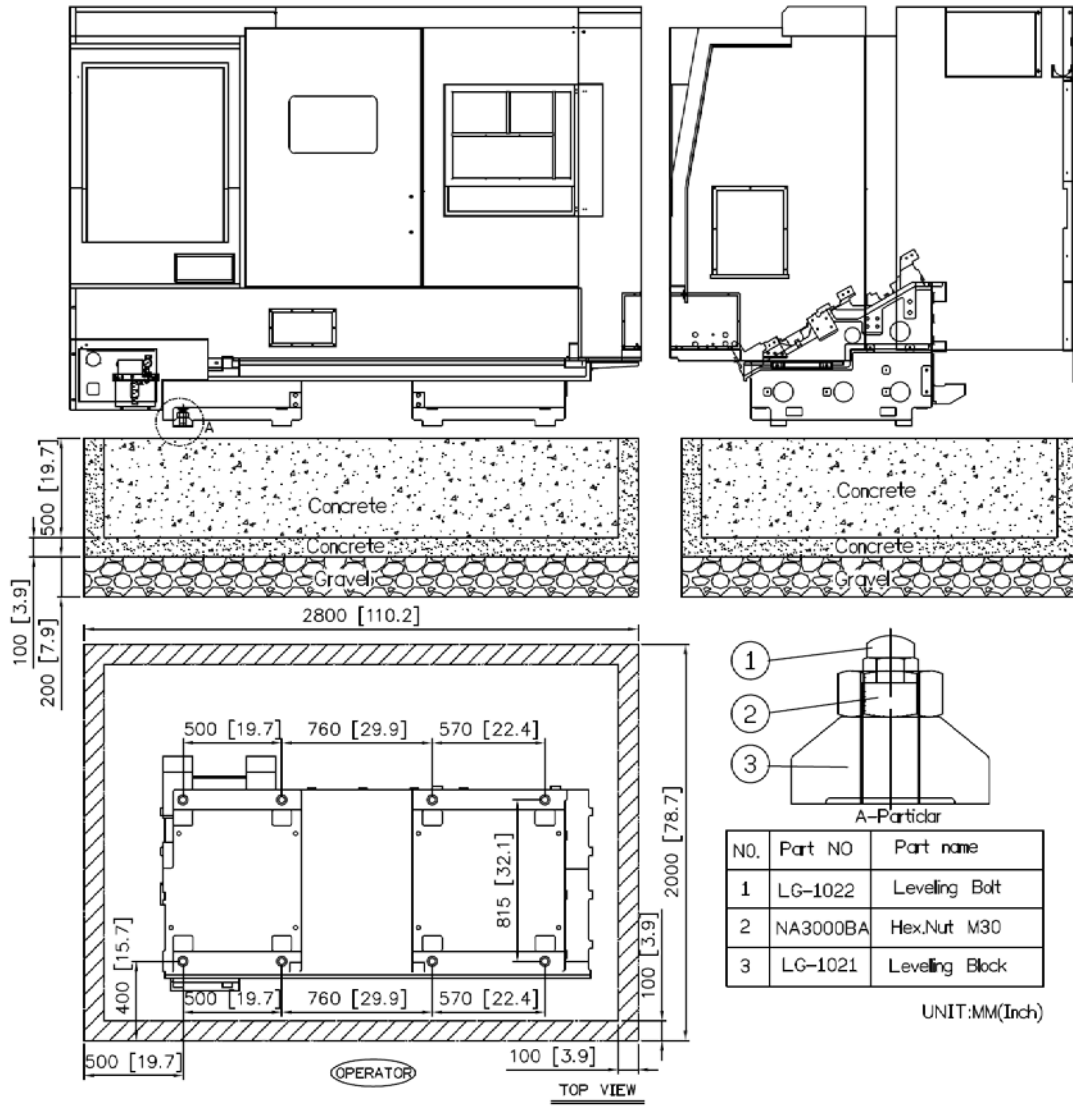
SL 3300YS

**Installation
Packet**



Unit:mm(inch)





| 6/21/2019 MACHINE MODEL | KVA | AMPS @ 220 | Coolant | Slideways | Hyd. Unit | Transmission | Chuck | Oil for Air | |
|-------------------------------|-----|---------------|----------|----------------|-----------------|---------------|------------------|-------------|-----|
| SL 15 | 20 | 52 | 31.7 gal | 0.79 gal | 3.7 gal | N/A | sw-10 lithium | N/A | |
| SL 15M | 20 | 52 | 31.7 gal | 0.79 gal | 3.7 gal | N/A | | 6 oz | |
| SL 20 | 20 | 52 | 31.7 gal | 0.79 gal | 3.7 gal | N/A | | N/A | |
| SL 26 | 25 | 66 | 31.7 gal | 0.79 gal | 3.7 gal | N/A | | N/A | |
| SL 26M | 25 | 66 | 31.7 gal | 0.79 gal | 3.7 gal | N/A | | 6 oz | |
| SL 30 | 25 | 66 | 60 gal | 0.79 gal | 3.7 gal | N/A | | N/A | |
| SL 15YS | 30 | 79 | 45 gal | 0.79 gal | 3.7 gal | N/A | | 6 oz | |
| SL 20YS | 30 | 79 | 45 gal | 0.79 gal | 3.7 gal | N/A | | 6 oz | |
| SL 200 | 25 | 66 | 53 gal | 0.79 gal | 3.7 gal | N/A | | N/A | |
| SL 260 | 25 | 66 | 53 gal | 0.79 gal | 3.7 gal | N/A | | .2 OZ | N/A |
| SL 280 | 25 | 66 | 53 gal | 0.79 gal | 3.7 gal | N/A | | N/A | |
| SL 280L | 25 | 66 | | 0.79 gal | 3.7 gal | N/A | | N/A | |
| SL 260M | 40 | 105 | 53 gal | 0.79 gal | 3.7 gal | N/A | | 6 oz | |
| SL 280M | 40 | 105 | 53 gal | 0.79 gal | 3.7 gal | N/A | | 6 oz | |
| SL3300YS | 55 | 144 | 75 gal | 0.79 gal | 11.8 gal | N/A | | 6 oz | |
| SL3600LY | 50 | 131 | 95 gal | 0.79 gal | 11.8 gal | N/A | | 6 oz | |
| SL 3500 | 60 | 157 | 153 | 0.79 gal | 33 gal | 5.2 gal | | N/A | |
| SL 4500 | 60 | 157 | 179 | 0.79 gal | 33 gal | 5.2 gal | N/A | | |
| SL 5500 | 75 | 197 | 206 | 0.79 gal | 33 gal | 5.2 gal | N/A | | |
| | | | | Shell Oil T68 | Mobil DTE 24 | Mobil Oil Lig | grease daily | DTE Light | |
| | | | | Mobil Vactra#2 | | ISO VG 32 | | check daily | |
| | | | | check daily | check daily | check daily | | | |

