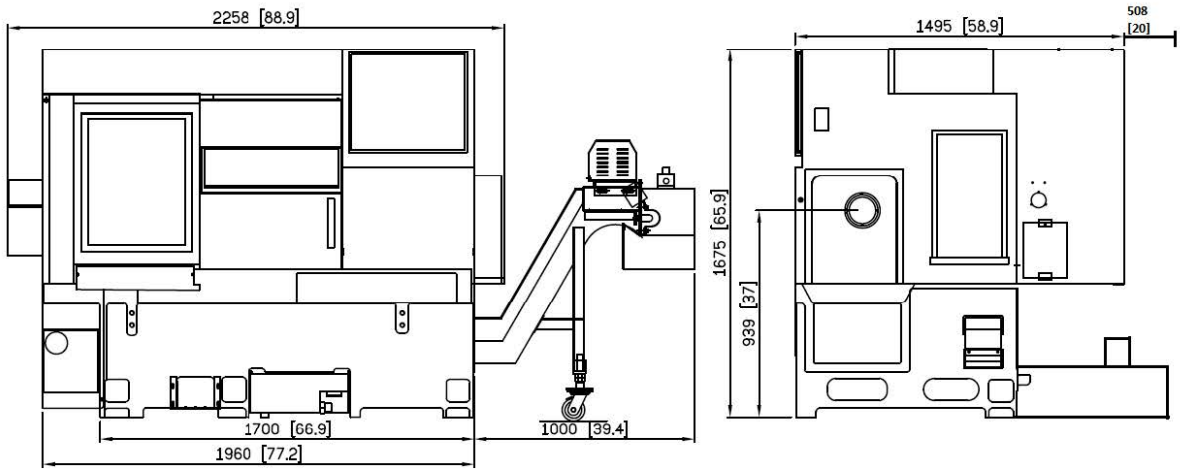




**SL 15M**

**Installation  
Packet**

SL15/20/26(M)



### 3.2. Requirements of the foundation

The foundation has great effects on the accuracy of the machine, and machining accuracy by machine installation.

Therefore, a foundation site must be selected with full care.

Refer to Fig. 4-2 to make foundation.

\* Dimension should be according to the conditions of the ground.

\* Foundation strength: 28.8 KPa over for  
32.5 KPa over for Series

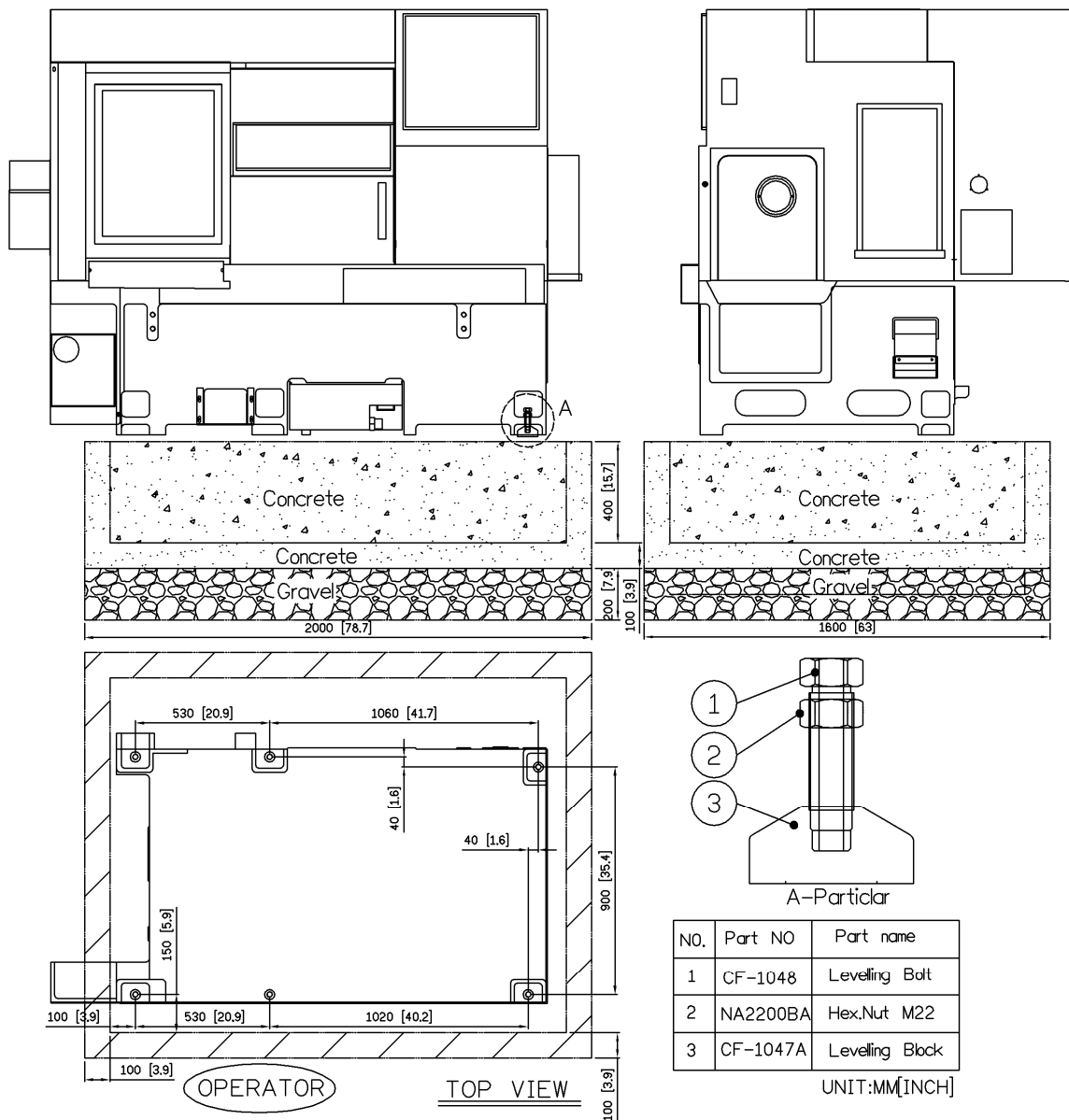


Fig. 3.2.1

Conestoga Trailers arranged by Walsh Logistics required for all machine shipments

Model	Description	ESTIMATED PACKING	
		(Size - FEET)	(Size - LBS)
SL 15	MACHINE	9'7 x 7'6 x 6'11	8,333
SL 20	MACHINE	9'7 x 7'6 x 6'11	8,333
SL 26	MACHINE	9'8 x 7'7 x 6'11	8,333
SL 15M	MACHINE	9'7 x 7'6 x 6'11	8,708
SL 26M	MACHINE	9'8 x 7'7 x 6'11	8,863
SL 15YS	MACHINE	11'11 x 7' x 7'8	8,598
SL 20YS	MACHINE	11'11 x 7'7 x 7'8	8,598
SL 280LYS			
SL 200	MACHINE	13'11 x 7'5 x 6'9	11,023
SL 260(M)	MACHINE	16'5 x 7'5 x 7'4	11,023
SL 280(M)	MACHINE	14' x 7'7 x 6'10	13,029
SL 280L	MACHINE	16'5 x 7'5 x 7'4	13,228
SL 3500	MACHINE	17'3 x 7'7 x 8'	20,613
SL 4500	MACHINE	17'9 x 7'7 x 8'	21,980
SL4500L	MACHINE	21' x 7.5' x 8.4'	32,017
SL4500L	CONVEYOR	16'x7.5'x6'	2,028
SL 5500	MACHINE	23.2'x7.5'8.5'	41,887
SL 5500	CONVEYOR	19'x7.5'6.5'	8,818



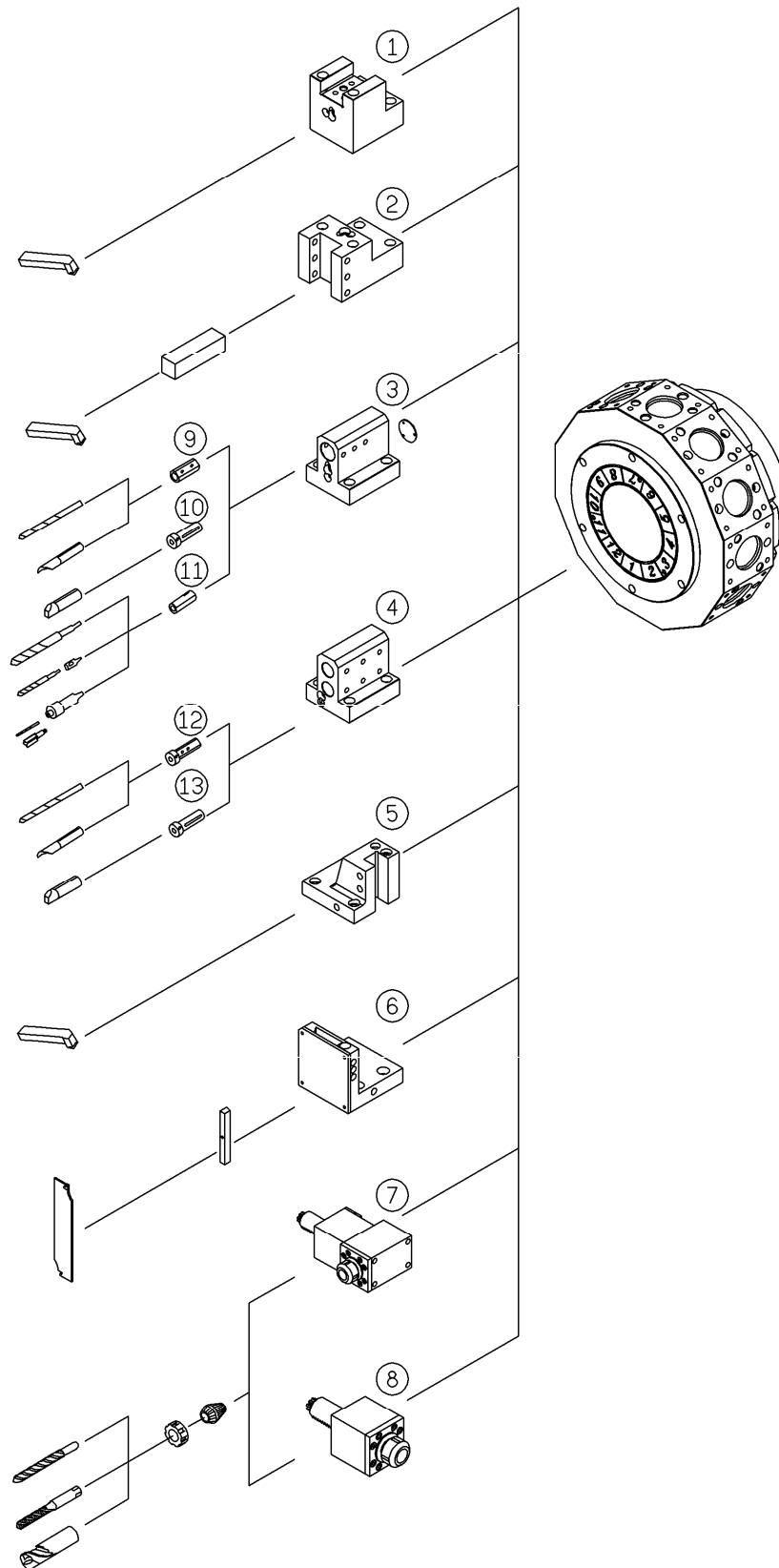


Fig 2.7.2.2 Tooling system for power turret (12 st.)

\*The information of tooling system please refer to Ch. 7.1.2

\*Only for and series. Live tooling tools rotate in working position only and the turret part no. is CY-3704.

NO.	Part Name	Metric Part No.	Size (mm)	British Part No.	Size (inch)	Qty
1	Face Tool Holder	CY-3749	□20	CY-37A8	□0.75	1
2	Face Cutting Tool Holder	CY-3748	□20	CY-37A7	□0.75	6
3	Throw-away Drill Holder	CY-3747	φ 25	CY-37A6	φ 1	6
4	Boring Bar Holder	CY-3790	φ 20	CY-37B4	φ 0.75	OP
5	Cut-off Tool Holder	CY-3797	□20	CY-37B1	□0.75	1
6	Cut-off Tool Holder (Grooving type)	CY-3795	3	CY-3795	0.12	OP
7	90° Power-driven tool	CY-4783	ER-25	CY-4783	ER-25	OP
8	0° Power-driven tool	CY-4782	ER-25	CY-4782	ER-25	OP
9	Boring Bar Sleeve (OD:25mm / 1")	CX-4588	φ 20	CX-45B2	φ 0.75	1
		CX-4589	φ 16	CX-45B3	φ 0.625	1
10	Throw-away Drill Socket (OD:25mm/1")	CL-3762	φ 8	CL-3955A	φ 0.375	1
		CL-3763	φ 10	CL-3955B	φ 0.5	1
		CL-3764	φ 12	CX-45B6A	φ 0.125	1
		--	--	CX-45B6B	φ 0.25	1
11	Boring Bar Sleeve (OD:25/1")	CX-4586	MT-1	CX-45B0	MT-1	1
		CX-4587	MT-2	CX-45B1	MT-2	1
12	Boring Bar Sleeve (OD:20mm /0.75")	CL-3753A	φ 8	CL-3909A	0.5	OP
		CL-3753B	φ 10	CL-3909B	0.375	OP
		CL-3753C	φ 12	--	--	OP
		CL-3753E	φ 6	--	--	OP
13	Boring Bar Sleeve (OD:20mm /0.75")	CL-3753D	φ 16	--	--	OP

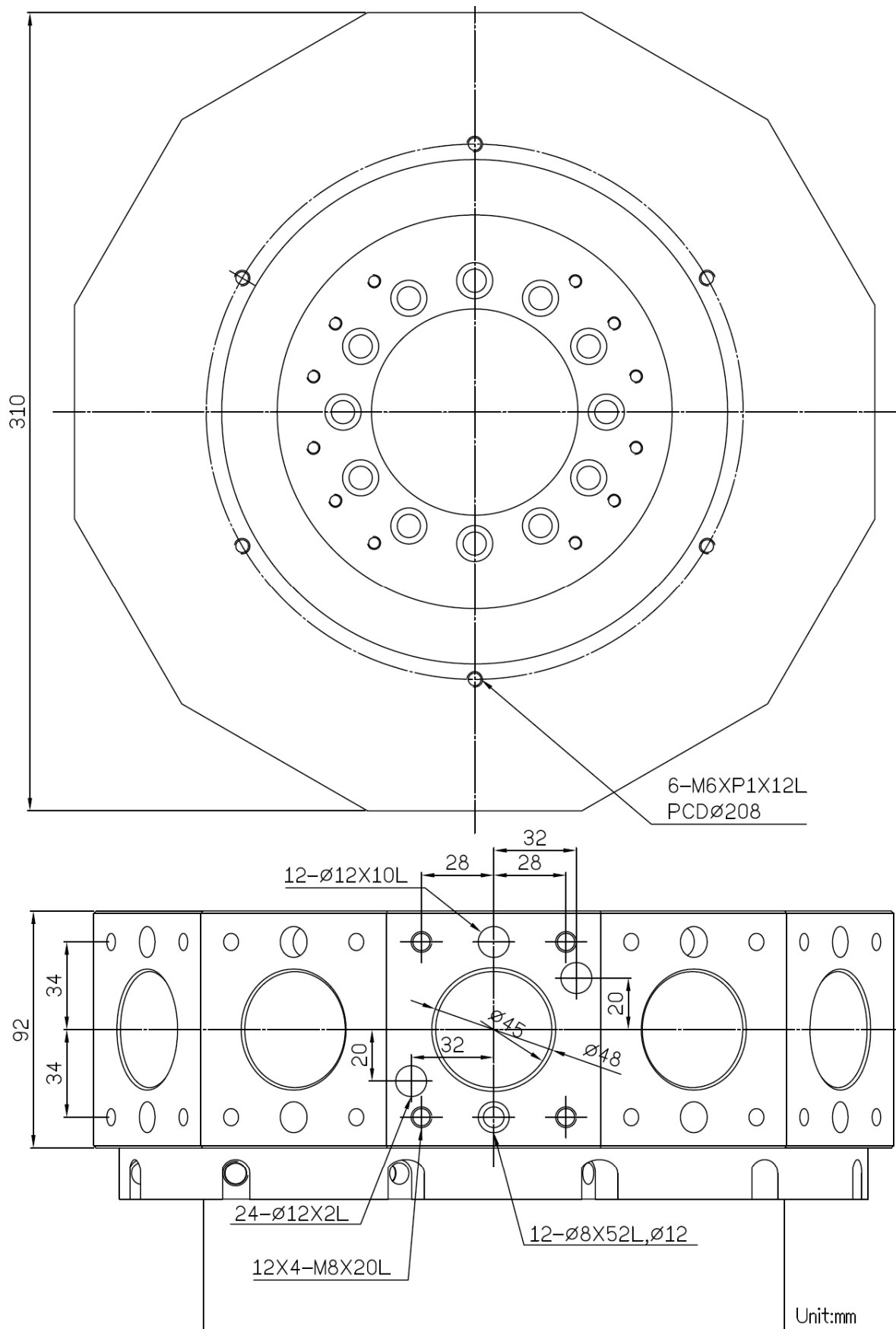


Fig 2.7.3.9 Turret head dimensional drawing for power turret (OP)  
(Live tooling tools rotate in working position only.)(CY-3704 for M and Y-series)



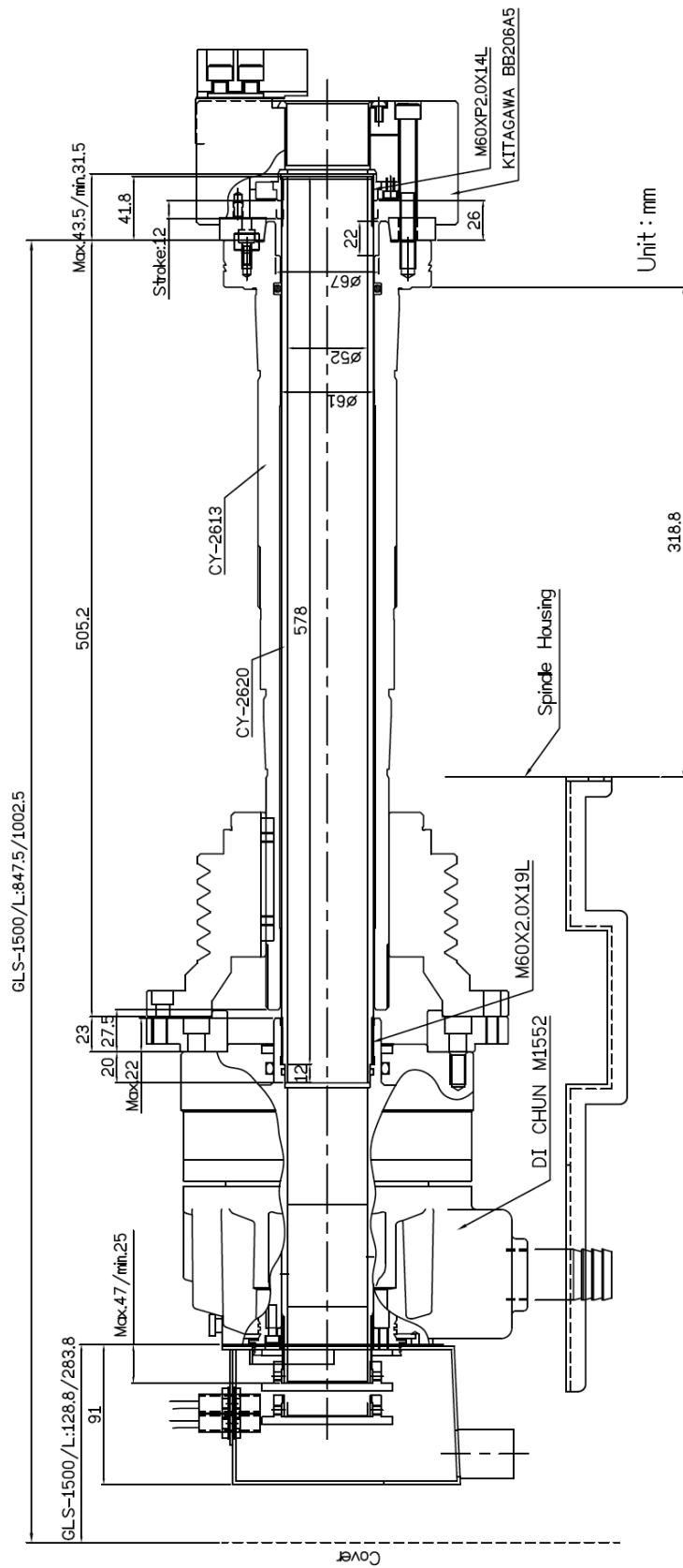


Fig. 2.6.8  $\phi$  52 Spindle (GLS-1500)