



SM 1688

**Installation
Packet**

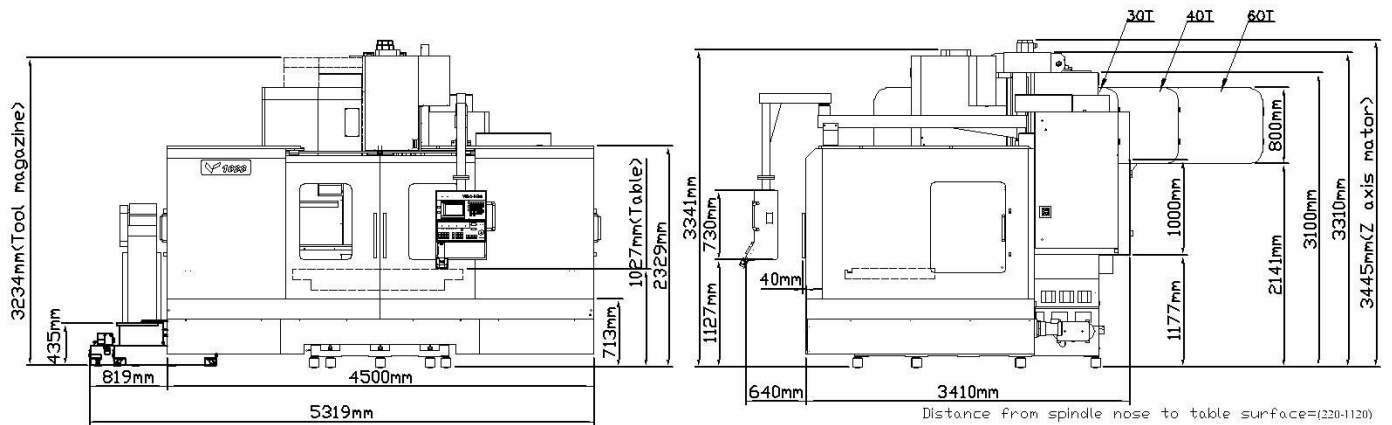
3.1.2 Airborne Noise

The sound pressure level at the operation's position according to ISO/DIS 230-5 is under 80 dBA.

It is the policy of the company to remedy the machine if the sound pressure is over 80 dBA while running test.

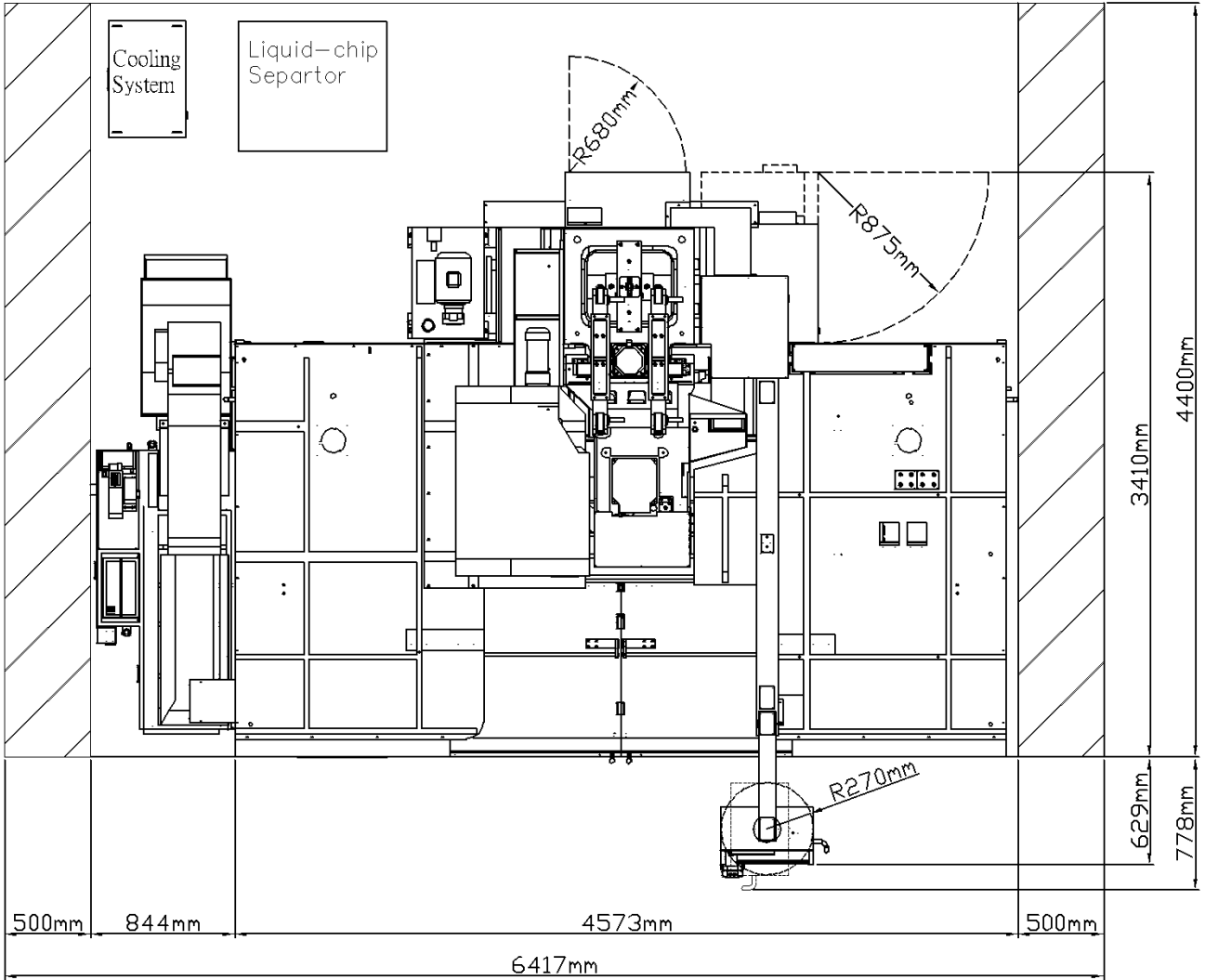
3.2 Profile Diagram And Main Part Name

3.2.1 Overall Drawing



Unit : mm

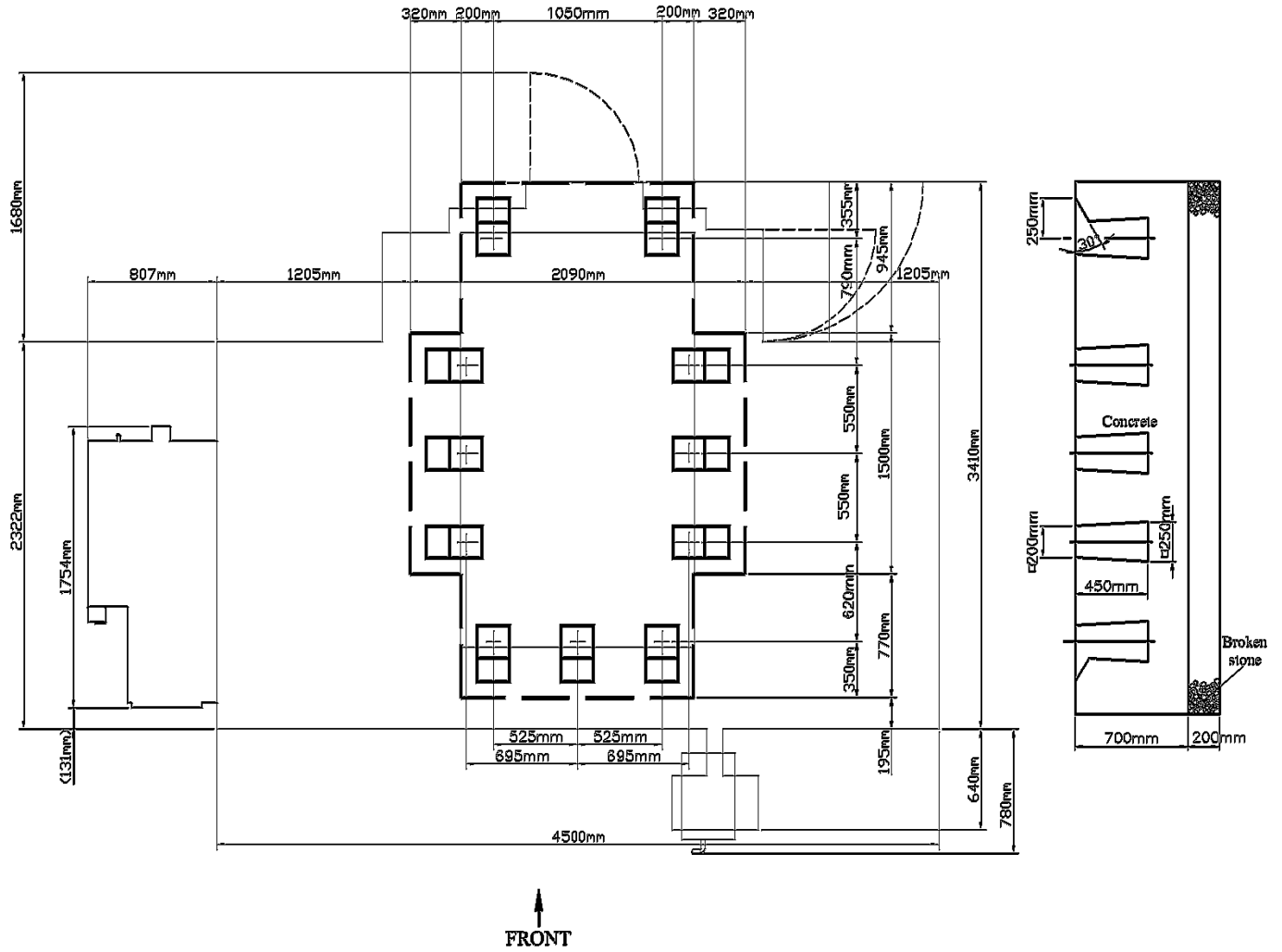
3.2.3 Maximum Floor Space



Unit : mm

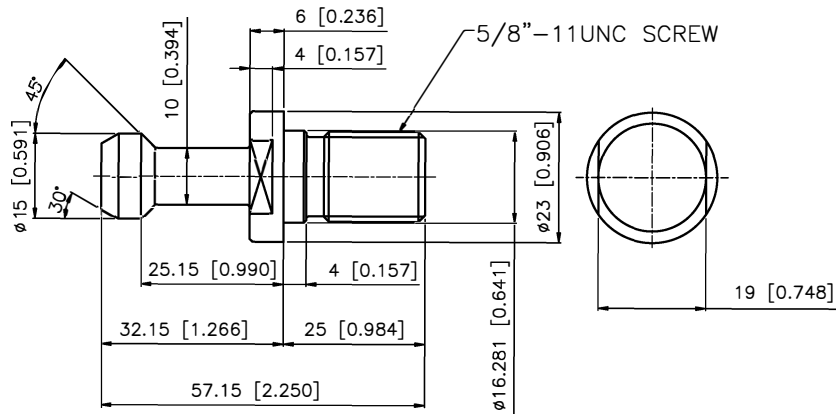
4.1.4 Foundation Diagram

a. Foundation diagram



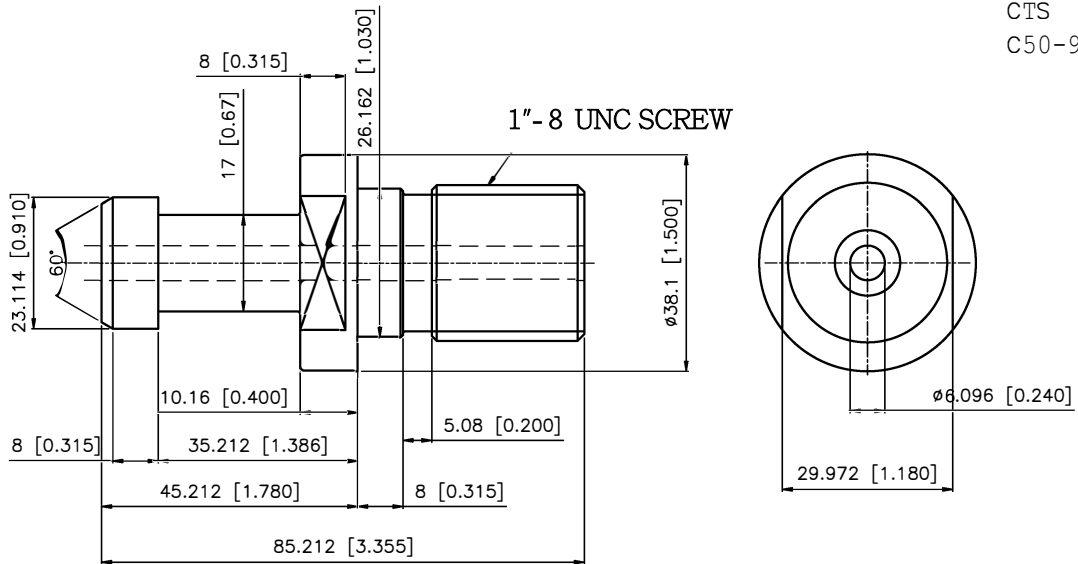
Unit : mm

#40



Lyndex PN
Non CTS
C40-4500
CTS
C40-4500H

#50



Lyndex PN
Non CTS
C50-9000
CTS
C50-9000H

POWER AND LUBRICATION REQUIREMENTS

2/24/2020 MACHINE MODEL	KVA	AMPS @ 220	Coolant	Slideways	Chilled Gearing Headstock	Oil for Air	Chiller OilTank
SM1688	45	118	116 gal	6L	20L	6oz	N/A
SM2600	50	131	360 gal	6L	20L	6oz	N/A
				Shell Tonna S3M68		Mobil DTE Light	Mobil Velocite #3
SM600	25	65	85 gal	4.5L	N/A	6oz	20L
SM1000 12K	25	65	85 gal	4.5L	N/A	6oz	20L
SM965 8K	25	65	95 gal	4.5L	1.2 gal	6oz	N/A
SM965 12K	40	104	95 gal	4.5L	N/A	6oz	20L
SM1165 8K	25	65	99 gal	4.5L	1.2 gal	6oz	N/A
SM1165 12K	40	104	99 gal	4.5L	N/A	6oz	20L
SM1165 6K	40	104	99 gal	4.5L	1.2 gal	6oz	N/A
SM1365 6K	40	104	103 gal	4.5L	1.2 gal	6oz	N/A
SM1365 12K	40	104	103 gal	4.5L	N/A	6oz	20L
SM1565 12K	40	104	105 gal	4.5L	N/A	6oz	20L
SM1565 6K	40	104	105 gal	4.5L	1.2 gal	6oz	N/A
SM1575 12K	40	104	105 gal	4.5L	N/A	6oz	20L
SM800APC	30	78		4.5L	N/A	6oz	20L
SM212/312	40	104	122 gal	4.5L	N/A	6oz	20L
				Shell Tonna S3M68	Mobil DTE 24	Mobil DTE Light	Mobil Velocite #6
				check daily	check daily	check daily	check daily

SM Series:

Air: 8 CFM @ 80-100 PSI
 Air Fitting Size: 5/8 DIA. MINIMUM ID
 Voltage: 200-235V

Conestoga Trailers arranged by Walsh Logistics required for machine shipments

Model	Description	ESTIMATED PACKING	
		(Size - INCHES)	(Size - LBS)
SM850	MACHINE	9'2 x 7'7 x 8'1	9,259
SM850	ACCESSORIES	9' x 7'3 x 3'1	1,003
SM1000	MACHINE	9'7 X 7'7 X 8'6	12,787
SM1000	ACCESSORIES	10'5 X 7'3 X 6'5	1,874
SM965	MACHINE	11'2 x 7'7 x 8'3	15,783
SM1165-8K	MACHINE	12'3 X 7'7 X 8'3	15,432
SM1165-6K	MACHINE	16'1 X 7'7 X 8'3	16,424
SM1165-6K	TOOL MAGAZINE	5'4 X 3'7 X 5'6	1,984
SM1165-12K	MACHINE	16'1 X 7'7 X 8'2	15,432
SM1165-12K	TOOL MAGAZINE	3'1 X 3'8 X 4'2	1,433
SM1365	MACHINE	16'3 X 7'7 X 8'1	16,755
SM1365	TOOL MAGAZINE	3'7 X 5'4 X 5'6	1,984
SM1565	MACHINE	17'8 x 7'7 x 8'1	18,298
SM1565	TOOL MAGAZINE	3'7 x 5'5 x 5'5	1,984
SM1688	MACHINE & ACCESSORIES	17'9 X 13'6 X 11'3	42,064
SM2600	MACHINE	17'9"x13'2"x13'	47,399
SM2600	ACCESSORIES	18'1"x7'6"x6'5"	5,512
SM2600	ACCESSORIES	15'9"x7'6"x7'8"	7,716
SM800-APC	MACHINE	11'9 x 7'7 x 8'3	16,535
SM800-APC	ACCESSORIES(tool magazine, chip conveyor, etc.)	13' x 7'6 x 6'4	3,616
Conestoga not required for SM1688 and SM2600			