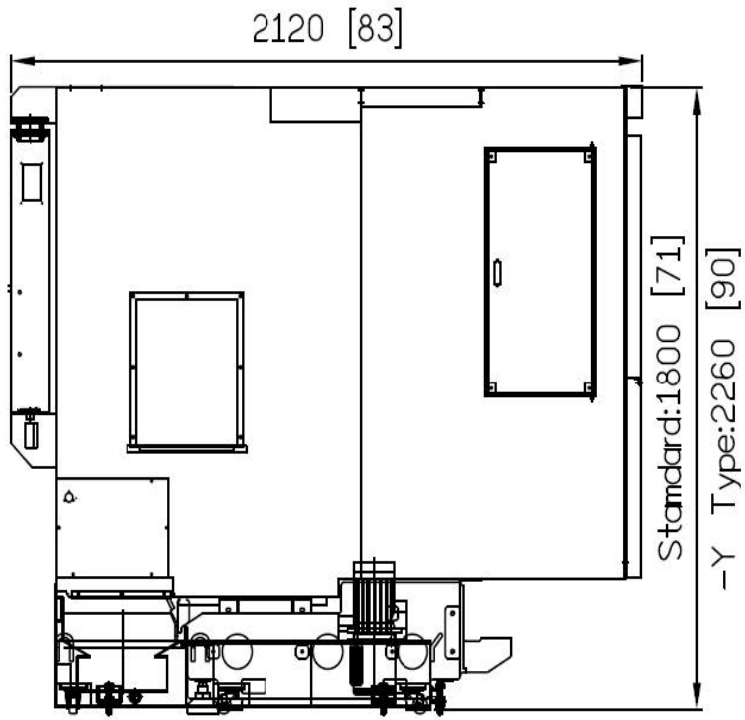


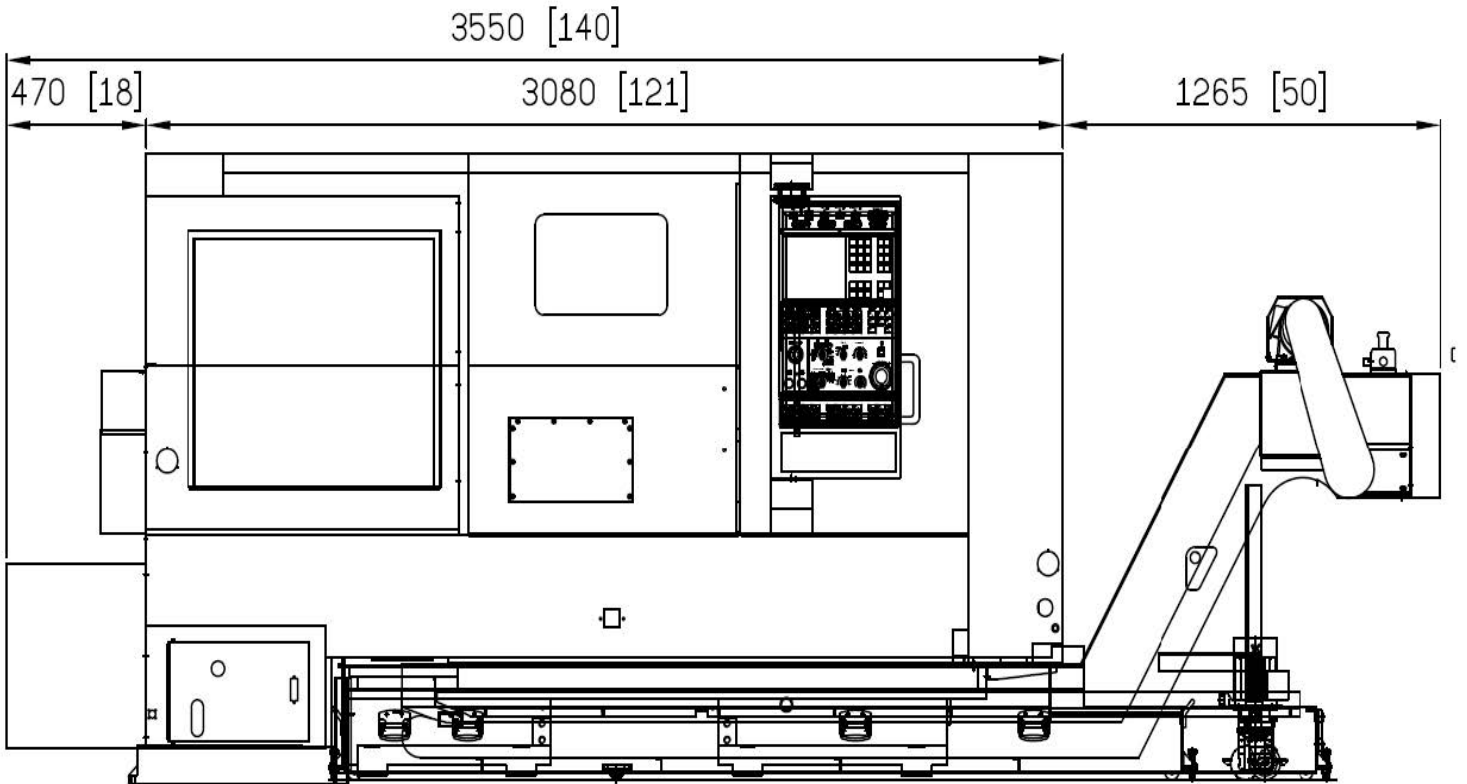
**SMART**  
MACHINE TOOL

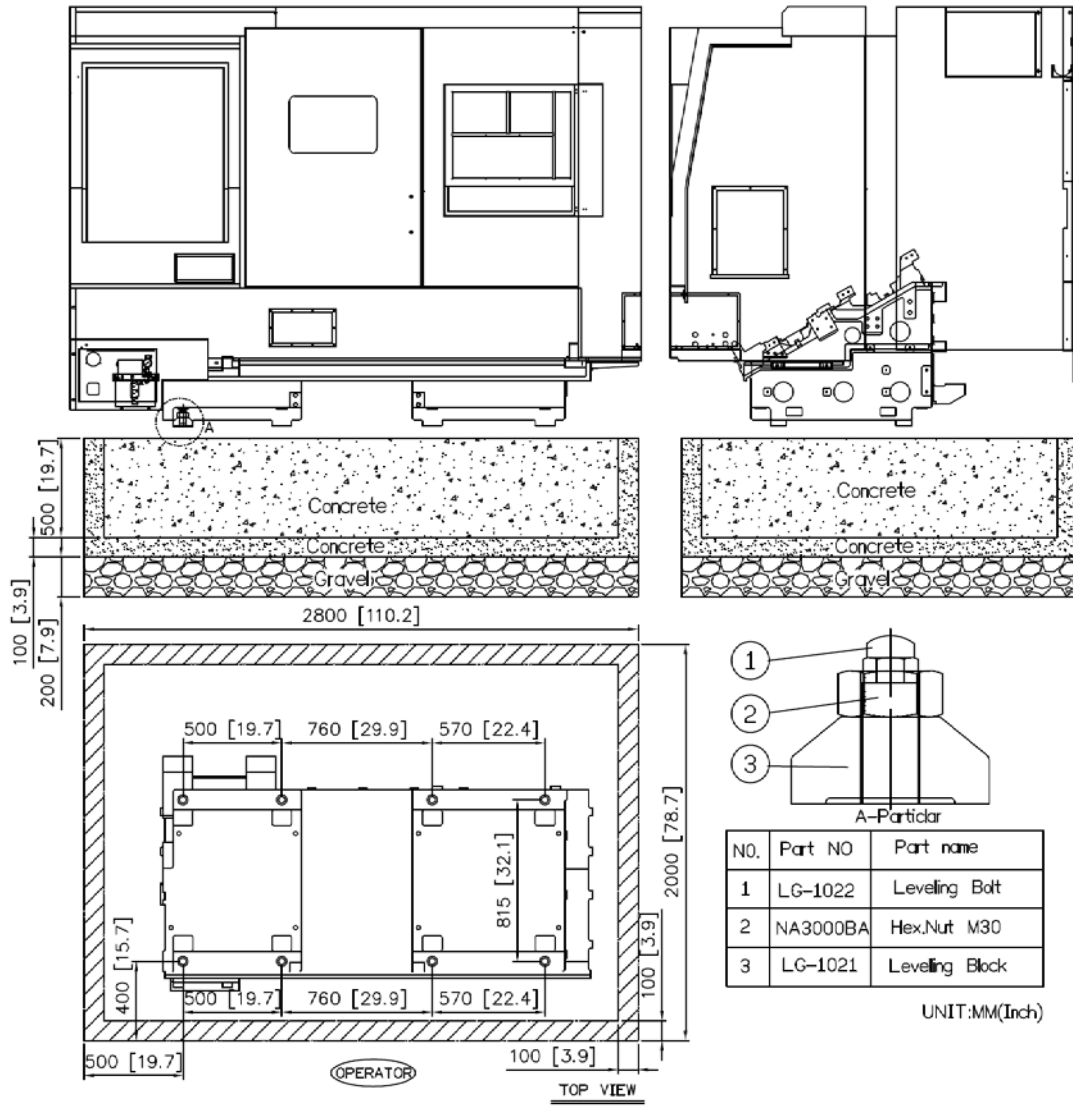
**SL 3300YS**

**Installation  
Packet**



Unit:mm(inch)





6/21/2019 MACHINE MODEL	KVA	AMPS @ 220	Coolant	Slideways	Hyd. Unit	Transmission	Chuck	Oil for Air	
SL 15	20	52	31.7 gal	0.79 gal	3.7 gal	N/A	sw-10 lithium	N/A	
SL 15M	20	52	31.7 gal	0.79 gal	3.7 gal	N/A		6 oz	
SL 20	20	52	31.7 gal	0.79 gal	3.7 gal	N/A		N/A	
SL 26	25	66	31.7 gal	0.79 gal	3.7 gal	N/A		N/A	
SL 26M	25	66	31.7 gal	0.79 gal	3.7 gal	N/A		6 oz	
SL 30	25	66	60 gal	0.79 gal	3.7 gal	N/A		N/A	
SL 15YS	30	79	45 gal	0.79 gal	3.7 gal	N/A		6 oz	
SL 20YS	30	79	45 gal	0.79 gal	3.7 gal	N/A		6 oz	
SL 200	25	66	53 gal	0.79 gal	3.7 gal	N/A		N/A	
SL 260	25	66	53 gal	0.79 gal	3.7 gal	N/A		.2 OZ	N/A
SL 280	25	66	53 gal	0.79 gal	3.7 gal	N/A		N/A	
SL 280L	25	66		0.79 gal	3.7 gal	N/A		N/A	
SL 260M	40	105	53 gal	0.79 gal	3.7 gal	N/A		6 oz	
SL 280M	40	105	53 gal	0.79 gal	3.7 gal	N/A		6 oz	
SL3300YS	55	144	75 gal	0.79 gal	11.8 gal	N/A		6 oz	
SL3600LY	50	131	95 gal	0.79 gal	11.8 gal	N/A		6 oz	
SL 3500	60	157	153	0.79 gal	33 gal	5.2 gal		N/A	
SL 4500	60	157	179	0.79 gal	33 gal	5.2 gal	N/A		
SL 5500	75	197	206	0.79 gal	33 gal	5.2 gal	N/A		
				Shell Oil T68	Mobil DTE 24	Mobil Oil Lig	grease daily	DTE Light	
				Mobil Vactra#2		ISO VG 32		check daily	
				check daily	check daily	check daily			

Conestoga Trailers arranged by Walsh Logistics required for all machine shipments

Model	Description	ESTIMATED PACKING	
		(Size - FEET)	(Size - LBS)
SL 15	MACHINE	9'7 x 7'6 x 6'11	8,333
SL 20	MACHINE	9'7 x 7'6 x 6'11	8,333
SL 26	MACHINE	9'8 x 7'7 x 6'11	8,333
SL 15M	MACHINE	9'7 x 7'6 x 6'11	8,708
SL 26M	MACHINE	9'8 x 7'7 x 6'11	8,863
SL 15YS	MACHINE	11'11 x 7' x 7'8	8,598
SL 20YS	MACHINE	11'11 x 7'7 x 7'8	8,598
SL15L	MACHINE	12'x7'5"x 7'3"	8,974
SL20L	MACHINE	12'x7'5"x 7'3"	9,074
SL 200	MACHINE	12'10"x7'5"x7'8"	10,099
SL 260(M)	MACHINE	16'5 x 7'5 x 7'4	11,023
SL 280(M)	MACHINE	14' x 7'7 x 6'10	13,029
SL 280L	MACHINE	16'5 x 7'5 x 7'4	13,228
SL30	MACHINE	17.5'x7.5'x7.1'	13,737
SL3300YS	MACHINE	18.2x7.5x8.3	16,755
SL3600LY	MACHINE	19.7'x7.6'x8.2'	22,443
SL 3500	MACHINE	17'3 x 7'7 x 8'	20,613
SL 4500	MACHINE	17'9 x 7'7 x 8'	21,980
SL4500L	MACHINE	21' x 7.5' x 8.4'	32,017
SL4500L	CONVEYOR	16'x7.5'x6'	2,028
SL 5500	MACHINE	23.2'x7.5'8.5'	41,887
SL 5500	CONVEYOR	19'x7.5'6.5'	8,818

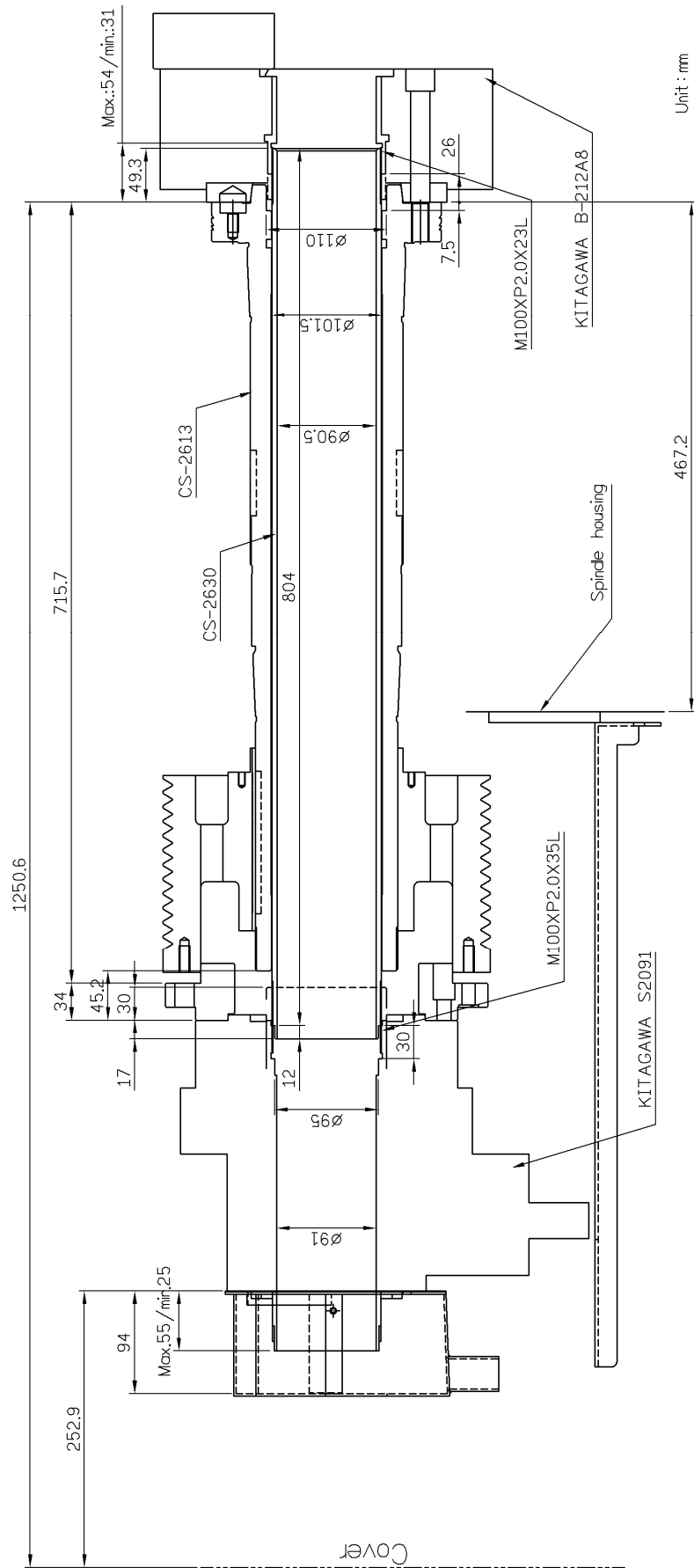


Fig. 2.6.9 GS-3300 Spindle(Bar Capacity  $\phi$  90mm)